

X3 Cross-Trainer Base 120/60 Domestic Cord

X3-XX00-0203

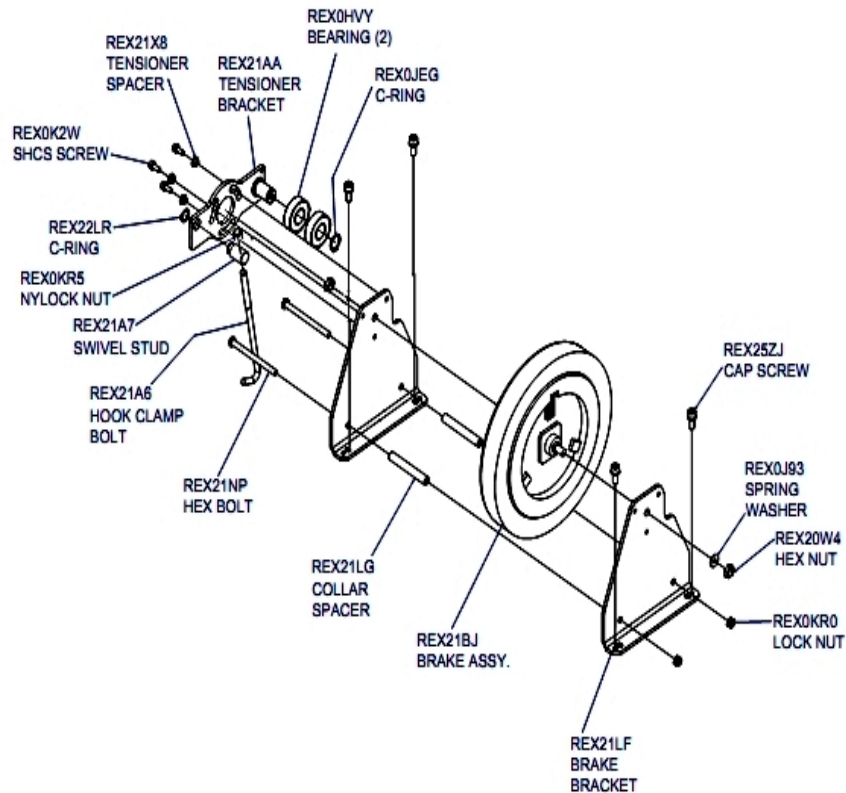
Parts Manual

2/6/2024 2:13:14 AM

Table of Contents

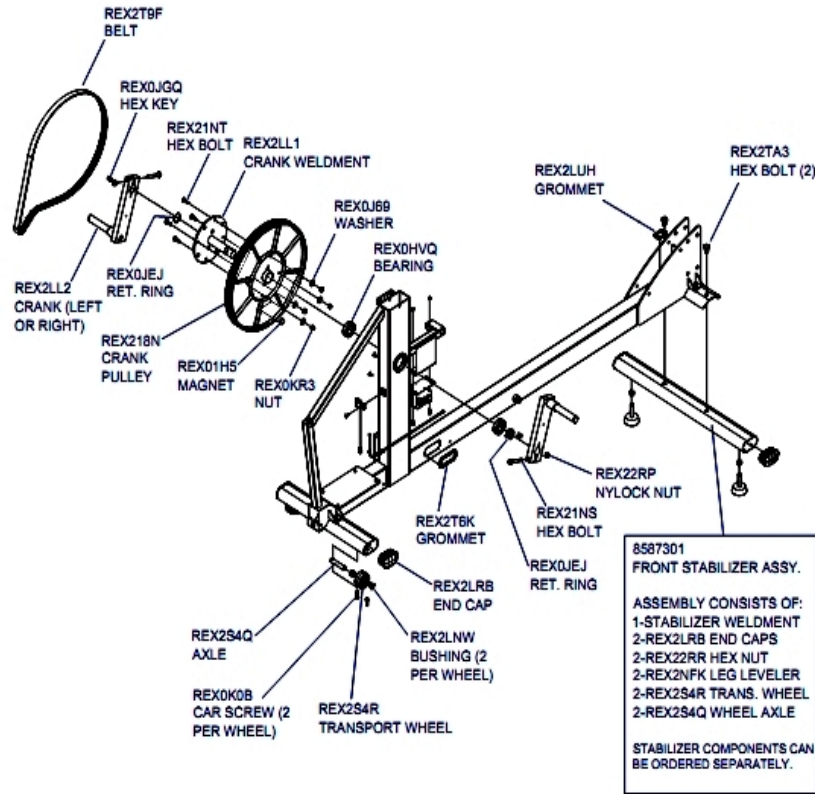
[Brake and Tensioner Components.....](#)3
[Crank Components.....](#)4
[Idler and Coupler Assemblies.....](#)6
[Main Shrouds and Crank Covers.....](#)7
[Miscellaneous.....](#)8
[Motor, Reed Switch and Cables.....](#)9
[Pedal Lever Assemblies and Components.....](#)10
[Rocker Arms and Clevis Covers.....](#)12
[Uprights and Related Components.....](#)13
[Wiring Diagram.....](#)15

Brake and Tensioner Components



Ref #	Part Number	Qty	Description
-	REX0HVV	2	BEARING, BALL 6204ZZ
-	REX25ZJ	2	CAP SCREW, M8 X 1.25-20
-	REX0JEG	1	C-RING, A-20
-	REX0K2W	3	SCREW, SHCS BRAKE MTG
-	REX0KR0	2	NUT, LOCK M12 X 1.75-12
-	REX0KR5	1	NUT, NYLOCK M10 X 1.5, 10M THK
-	REX20W4	1	NUT, HEX M10 X 1.5-6
-	REX21A6	1	BOLT, HOOK CLAMP
-	REX21A7	1	STUD, SWIVEL
-	REX21AA	1	BRKT, BELT TENSIONER
-	REX21BJ	1	BRAKE, ASSY EDDY CURRENT
-	REX21LF	1	BRKT, BRAKE MTG
-	REX21LG	2	SPACER, COLLAR
-	REX21NP	2	BOLT, HEX HD M12 X 1.75-110
-	REX21X8	3	SPACER, TENSIONER
-	REX22LR	1	Ring: C-Ring, A-16
-	REX0J93	1	WASHER, SPRING 1.0

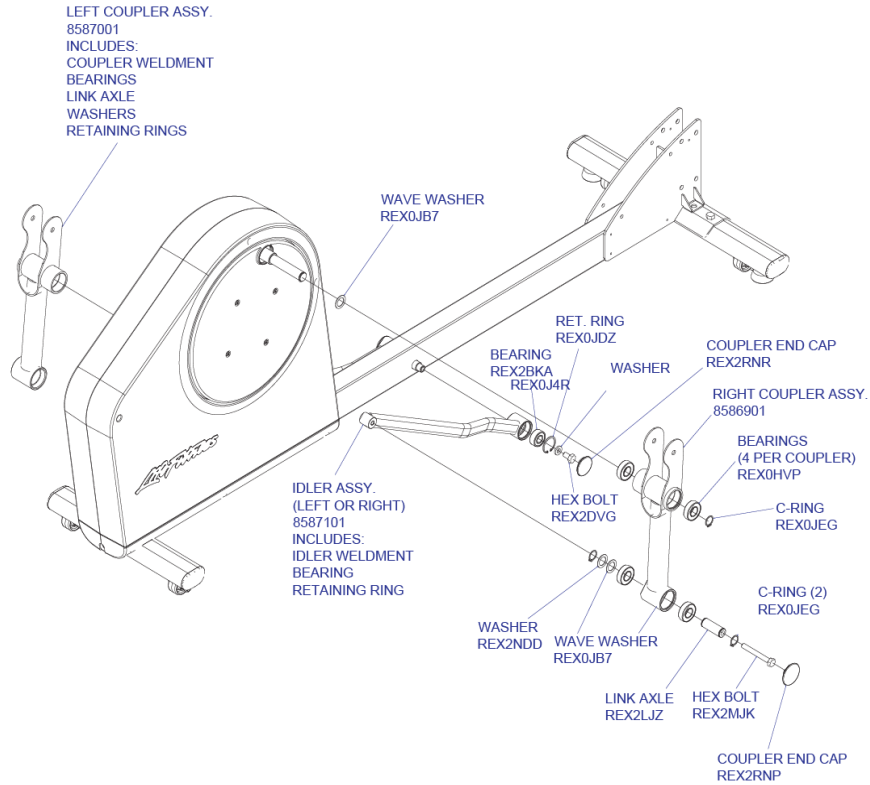
Crank Components



Ref #	Part Number	Qty	Description
-	3225301	2	BEARING, 12MM BALL
-	REX2TA3	2	BOLT, HEX M10X1.5-16 CLEAR ZINC
-	REX01H5	1	MAGNET Rexon
-	REX0J69	4	WASHER, FLAT .6 X 13-1
-	REX0JEJ	2	RING, RETAINING, 63/64
-	REX0JGQ	2	CRANK KEY
-	REX0K0B	4	Hardware: Cap Screw, M8 X 1.25-20
-	REX0KR3	4	NUT, LOCK M6 X 1, 6MM THK
-	REX218N	1	PULLEY, CRANK
-	REX21NS	2	BOLT, HEX HD. M8 X 1.25-60
-	REX21NT	4	Hardware: Bolt, HEX HD M6 X 1-20
-	REX22RP	2	NUT, NYLOCK M8 X 1.25 X 6MM THK
-	REX22RR	2	NUT, NYLOCK M10 X 1.5-8
-	REX2LL1	1	WLDMT, AXLE CRANK
-	REX2LL2	2	WLDMT, CRANK ARM
-	REX2LNW	4	BUSHING, IGUS
-	REX2LRB	4	STABILIZER ENDCAP
-	REX2LUH	1	GROMMET, 38MM X 25MM
-	REX2NFK	2	LEVELER, LEG
-	REX2S4Q	4	AXLE WHEEL TRANSPORT
-	REX2S4R	4	WHEEL TRANSPORT
-	REX2T6K	2	GROMMET 30MM X 70MM

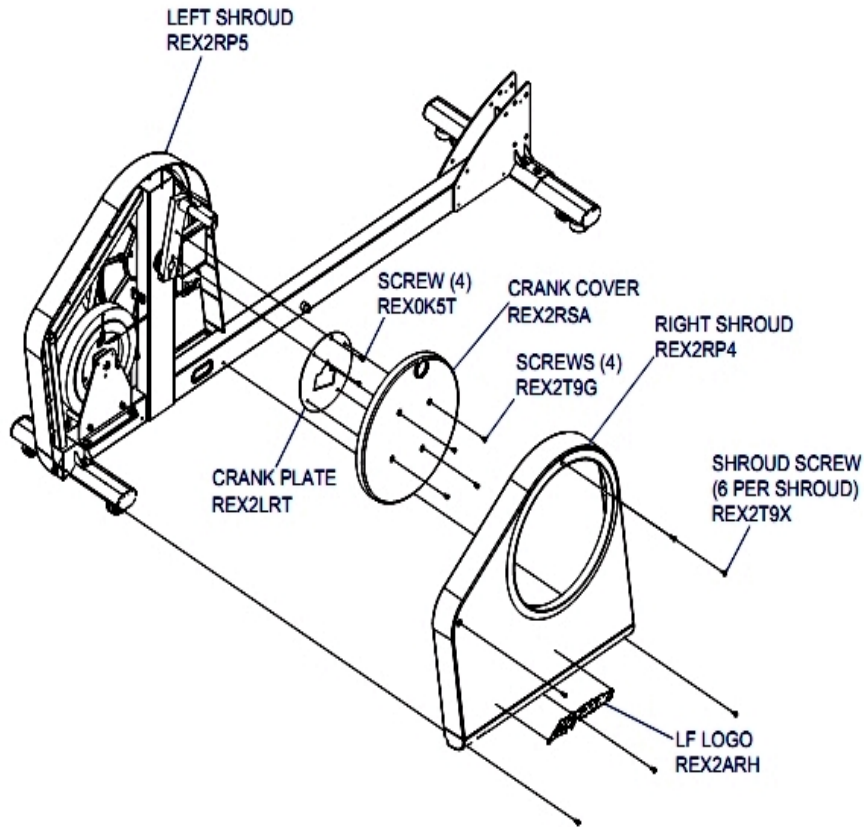
Ref #	Part Number	Qty	Description
-	REX2T9F	1	BELT POLY V J510
-	8587301	1	SERVICE ASSY, STABILIZER X3

Idler and Coupler Assemblies



Ref #	Part Number	Qty	Description
-	8586901	1	SERVICE ASSY, COUPLER LT X1 RT X3
-	8587001	1	SERVICE ASSY, COUPLER RT X1 LT X3
-	8587101	2	SERVICE ASSY, IDLER X1 X3
-	REX0HVP	8	BEARING BALL 6004ZZ
-	REX0JB7	4	WAVE WASHER; 20.5MM X 26.7MM T = 0.25MM
-	REX0JDZ	2	RING, RETAINING B-35
-	REX2RNR	2	CAP END, IDLER
-	REX2BKA	2	Bearing, Self-Align, 2202
-	REX2LJZ	2	AXLE, ADJ LINK
-	REX2MJK	2	BOLT, HEX HEAD M10 X 1.5-85
-	REX2NDD	2	WASHER, SPACER
-	REX2RNP	2	CAP END COUPLER
-	REX0JEG	6	C-RING, A-20

Main Shrouds and Crank Covers

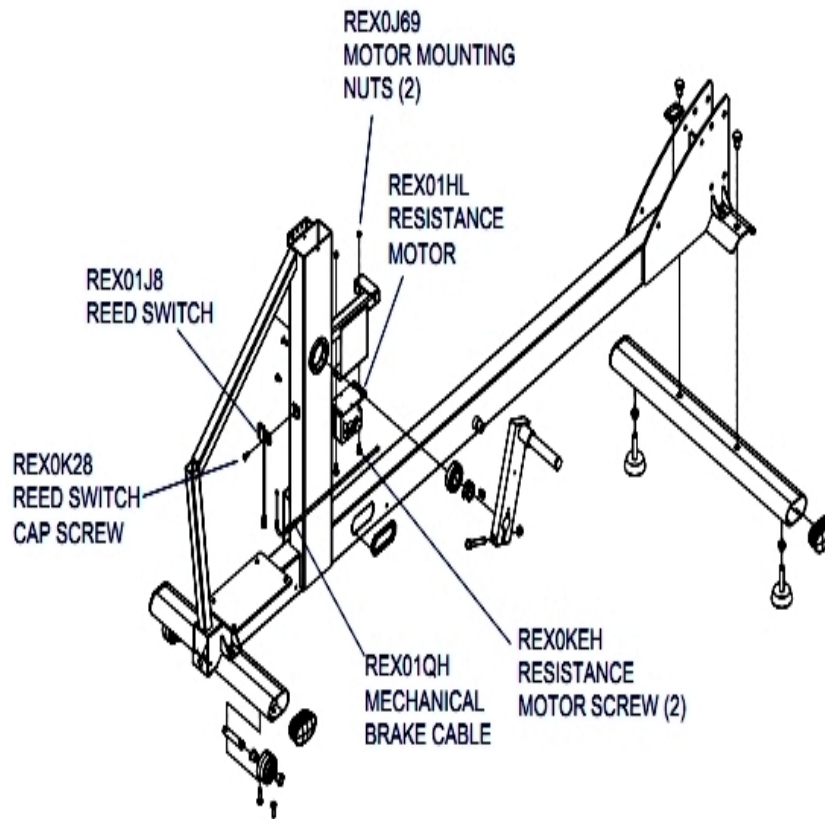


Ref #	Part Number	Qty	Description
-	REX0K5T	4	SCREW, PHL M5 X 0.8-10
-	REX2T9X	12	SCREW, PHL PAN M5X.8-12 CLEAR ZINC
-	REX2T9G	4	SCREW, PHL PAN M5X.8-8 CLEAR ZINC
-	REX2RSA	1	COVER CRANK
-	REX2RP5	1	SHROUD REAR LT X1 X3
-	REX2RP4	1	SHROUD REAR RT X1 X3
-	REX2LRT	1	PLATE; CRANK
-	REX2ARH	2	LABEL, LIFEFITNESS LOGO

Miscellaneous

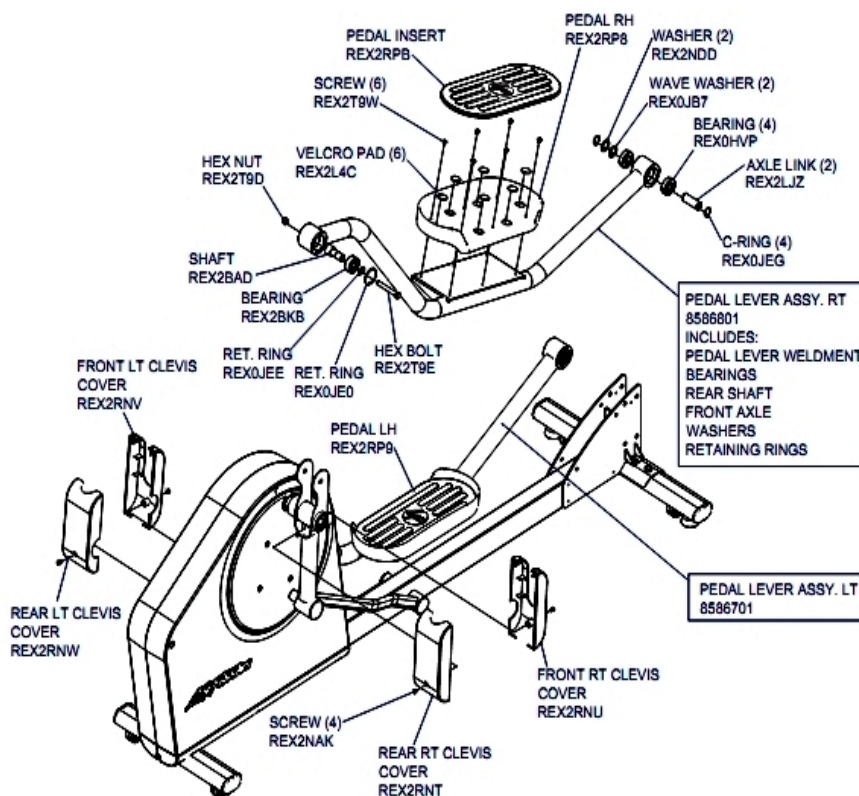
Ref #	Part Number	Qty	Description
-	8586201	1	Serv Assembly, Hardware Bag X3
-	8819801	1	Transformer, 100-240V, 9V, 1.5A, Domestic, W-Swite

Motor, Reed Switch and Cables



Ref #	Part Number	Qty	Description
-	REX0K28	1	CAP SCREW, M5 X 0.8-16
-	REX0J69	2	WASHER, FLAT .6 X 13-1
-	REX01QH	1	CABLE, BRAKE HARNESS
-	REX01J8	1	SWITCH, REED, RPM SENSOR
-	REX01HL	1	MOTOR, RESISTANCE DC
-	REX0KEH	2	SCREW, PAN HD W/PATCH M5 X .8-16

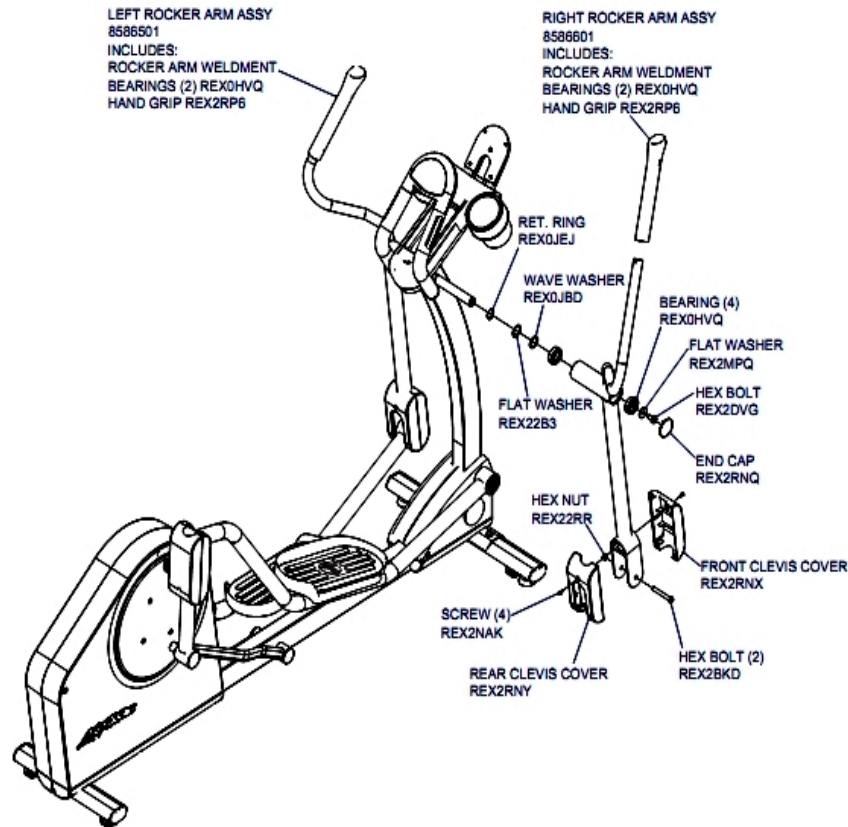
Pedal Lever Assemblies and Components



Ref #	Part Number	Qty	Description
-	8586701	1	SERVICE ASSY, PEDAL ASSY LT X1 X3
-	REX2T9W	12	SCREW, PHL TRUSS M5X.8-8
-	REX0HVP	4	BEARING BALL 6004ZZ
-	REX0JB7	2	WAVE WASHER; 20.5MM X 26.7MM T = 0.25MM
-	REX0JE0	2	RING, RETAINING B-40
-	REX0JEE	2	RING, RETAINING A-17
-	REX0JEG	4	C-RING, A-20
-	REX2BAD	2	SHAFT, COUPLER PEDAL CONN
-	REX2BKB	2	Bearing, Self-Align, 2203
-	REX2L4C	12	PAD VELCRO, LOOP SIDE
-	REX2LJZ	2	AXLE, ADJ LINK
-	REX2NAK	4	SCREW, CSL PAN M5 X 0.8-8
-	REX2NDD	2	WASHER, SPACER
-	REX2RNT	1	COVER, CLEVIS COUPLER REAR RT
-	REX2RNU	1	COVER, CLEVIS COUPLER FRT RT
-	REX2RNV	1	COVER, CLEVIS COUPLER FRT LT
-	REX2RNW	1	COVER, CLEVIS COUPLER REAR LT
-	REX2RP8	1	PEDAL RT X3
-	REX2RP9	1	PEDAL LT X3
-	REX2RPB	2	INSERT, CUSION PEDAL
-	REX2T9D	2	NUT HEX M10X1.5 BLACK ZINC
-	REX2T9E	2	BOLT HEX M10X1.5-74 BLACK ZINC

Ref #	Part Number	Qty	Description
-	8586801	1	Service Assembly, Pedal Assembly Right X1 X3

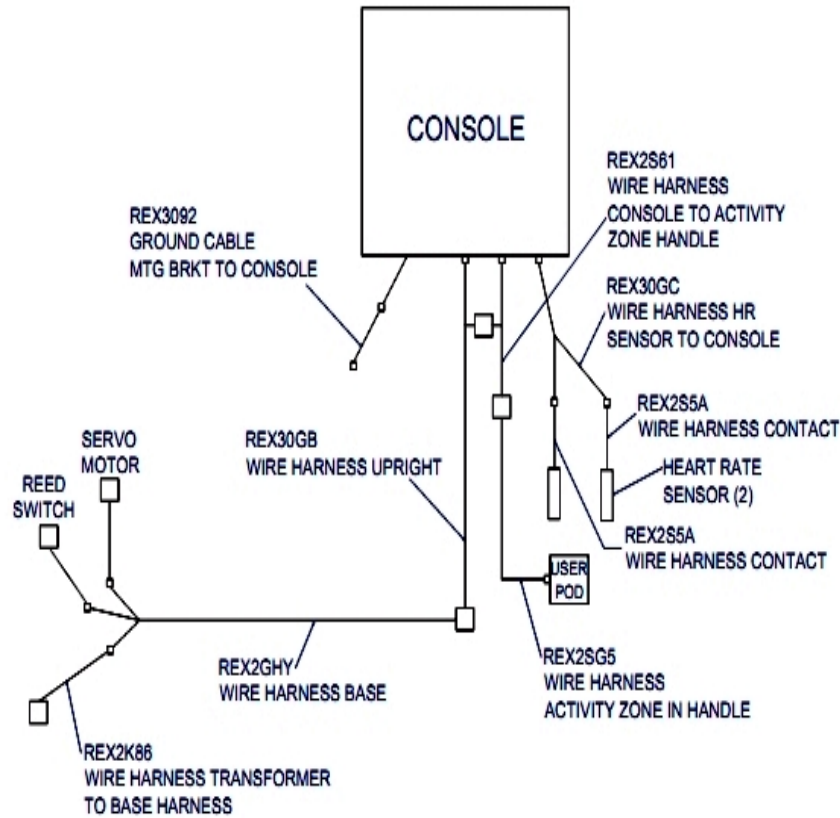
Rocker Arms and Clevis Covers



Ref #	Part Number	Qty	Description
-	REX2RNY	2	COVER, CLEVIS REAR
-	REX2RP6	2	GRIP, MOVING HANDLEBAR X3
-	3225301	8	BEARING, 12MM BALL
-	8586501	1	SERVICE ASSY, ROCKER LT X3
-	8586601	1	SERVICE ASSY, ROCKER RT X3
-	REX0JBD	2	WAVE WASHER; 25MM X 35MM
-	REX0JEJ	2	RING, RETAINING, 63/64
-	REX22B3	2	Hardware: Washer, .26 X 35-.8
-	REX22RR	2	NUT, NYLOCK M10 X 1.5-8
-	REX2BKD	2	BOLT, HEX HD M10 X 1.5-74
-	REX2DVG	2	BOLT, HEX M10 X 1.5-20
-	REX2MPQ	2	WASHER, 35MM OD X 10MM OD X 3MM THK
-	REX2NAK	4	SCREW, CSL PAN M5 X 0.8-8
-	REX2RNQ	2	CAP END ROCKER PIVOT
-	REX2RNX	2	COVER, CLEVIS FRONT

Ref #	Part Number	Qty	Description
-	REX2S4K	1	GROMMET UPRIGHT X1
-	REX2S9H	1	HANDLEBAR, OVERMOLDED RT X3
-	REX2S9J	1	HANDLEBAR, OVERMOLDED LT X3
-	REX2S9U	2	CAP END, STATIONARY ARMS
-	REX2T9J	14	SCREW, PHL PAN M3.5X20-8
-	REX2T9X	8	SCREW, PHL PAN M5X.8-12 CLEAR ZINC
-	8587201	1	SERVICE ASSY, USER POD X3 X5

Wiring Diagram



Ref #	Part Number	Qty	Description
-	REX2K86	1	CABLE, CT MOTOR-TRANSFORMER
-	REX2S5A	2	WIRE HARNESS H/R HANDLEBAR
-	REX2S61	1	WIRE HARNESS USER POD, USER POD SIDE
-	REX2SG5	1	WIRE HARNESS USER POD, CONSOLE SIDE
-	REX3092	1	CABLE ASSY, GROUND
-	REX30GB	1	CABLE ASSY, UPRIGHT
-	REX30GC	1	CABLE ASSY, HR SENSOR TO CONSOLE
-	REX2GHY	1	Cable, Cross-Trainer Base

