

# X3 Cross-Trainer Base DOM Cord

X3-XX00-0104

## Parts Manual

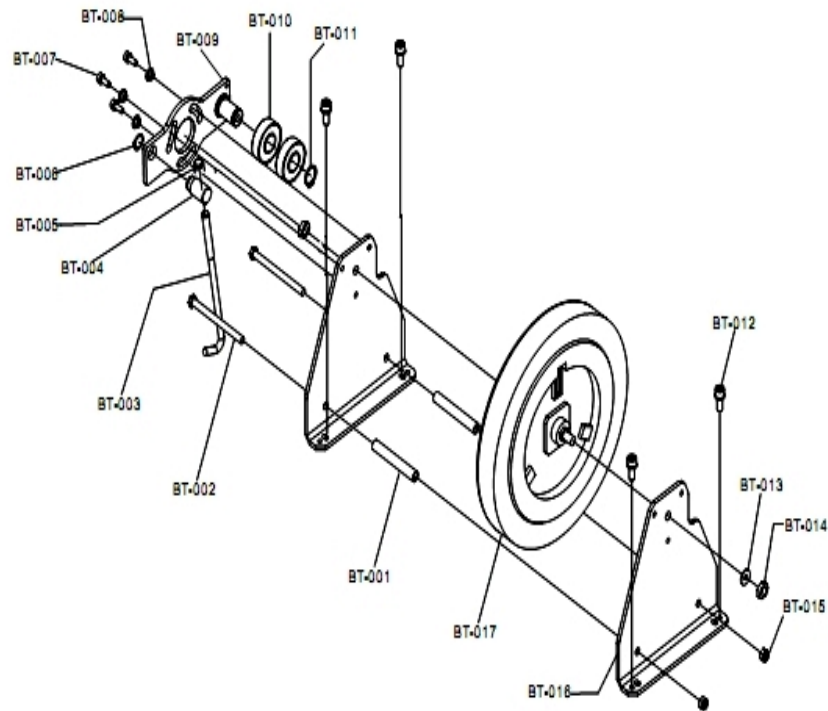
2/6/2024 2:13:14 AM

**Table of Contents**

---

[Brake and Tensioner Components.....](#)3  
[Console Assemblies.....](#)4  
[Crank Components.....](#)5  
[Idler and Coupler Components.....](#)7  
[Main Shrouds and Crank Cover.....](#)8  
[Miscellaneous.....](#)9  
[Motor, Reed Switch and Cables.....](#)10  
[Pedal Lever Assemblies and Components.....](#)11  
[Rocker Arms and Clevis Covers.....](#)13  
[Upright and Related Components.....](#)14  
[Wiring Diagram.....](#)16

## Brake and Tensioner Components



Ref #	Part Number	Qty	Description
BT-001	REX21LG	2	SPACER, COLLAR
BT-002	REX21NP	2	BOLT, HEX HD M12 X 1.75-110
BT-003	REX21A6	1	BOLT, HOOK CLAMP
BT-004	REX21A7	1	STUD, SWIVEL
BT-005	REX0KR5	1	NUT, NYLOCK M10 X 1.5, 10M THK
BT-006	REX22LR	1	Ring: C-Ring, A-16
BT-007	REX0K2W	3	SCREW, SHCS BRAKE MTG
BT-008	REX21X8	3	SPACER, TENSIONER
BT-009	REX3535	1	BRKT, BELT TENSOR
BT-010	REX0HVY	2	BEARING, BALL 6204ZZ
BT-011	REX0JEG	1	C-RING, A-20
BT-012	REX25ZJ	4	CAP SCREW, M8 X 1.25-20
BT-013	REX0J93	2	WASHER, SPRING 1.0
BT-014	REX20W4	2	NUT, HEX M10 X 1.5-6
BT-015	REX0KR0	2	NUT, LOCK M12 X 1.75-12
BT-016	REX21LF	1	BRKT, BRAKE MTG
BT-017	REX21BJ	1	BRAKE, ASSY EDDY CURRENT

## Console Assemblies

---



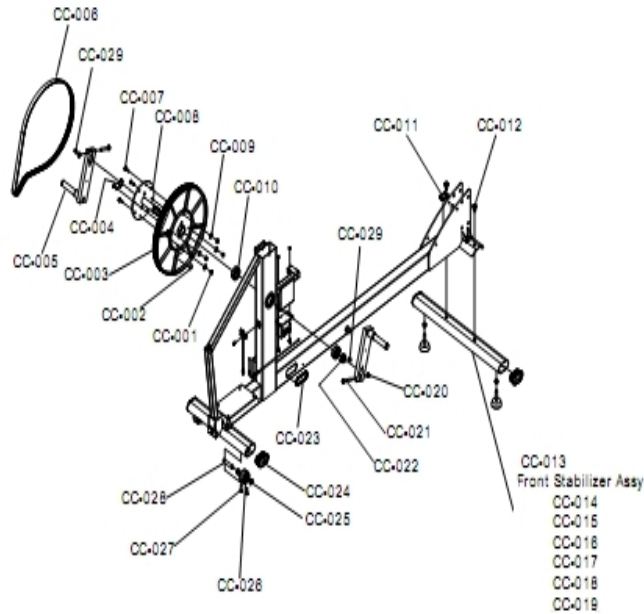
CN-001



CN-002

Ref #	Part Number	Qty	Description
CN-001	GC-000X-0104R	1	MSTR PURCHASED
CN-001	GC-040X-0104N	1	GO CT/BIKE CONSOLE, SPN/MET
CN-001	GC-020X-0104N	1	GO CT/BIKE CONSOLE, GER/MET
CN-002	TKC-020X-0104N	1	TRACK CT/BIKE CONSOLE, GER/MET
CN-002	TKC-000X-0104N	1	NLA: TRACK CT/BIKE CONSOLE, ENG/ENG+MET

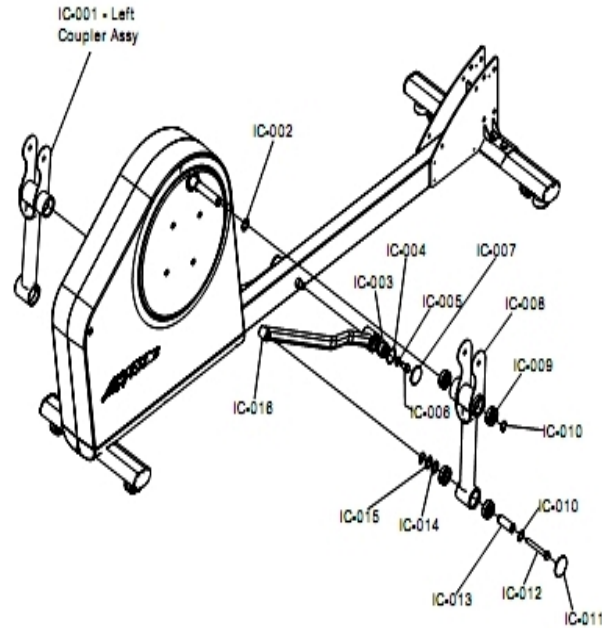
## Crank Components



Ref #	Part Number	Qty	Description
CC-001	REX0KR3	1	NUT, LOCK M6 X 1, 6MM THK
CC-002	REX01H5	1	MAGNET Rexion
CC-003	REX218N	1	PULLEY, CRANK
CC-004,CC-022	REX0JEJ	2	RING, RETAINING, 63/64
CC-005	REX2LL2	1	WLDMT, CRANK ARM
CC-006	REX2T9F	1	BELT POLY V J510
CC-007	REX21NT	1	Hardware: Bolt, HEX HD M6 X 1-20
CC-008	REX2LL1	1	WLDMT, AXLE CRANK
CC-009	REX0J69	1	WASHER, FLAT .6 X 13-1
CC-010	3225301	2	BEARING, 12MM BALL
CC-011	REX2LUH	1	GROMMET, 38MM X 25MM
CC-012	REX2TA3	2	BOLT, HEX M10X1.5-16 CLEAR ZINC
CC-013	8587301	1	SERVICE ASSY, STABILIZER X3
CC-014	REX2RN3	1	WLDMT, STABILIZER X3
CC-015,CC-024	REX2LRB	3	STABILIZER ENDCAP
CC-016	REX22RR	2	NUT, NYLOCK M10 X 1.5-8
CC-017	REX2NFK	2	LEVELER, LEG
CC-	REX2S4R	3	WHEEL TRANSPORT

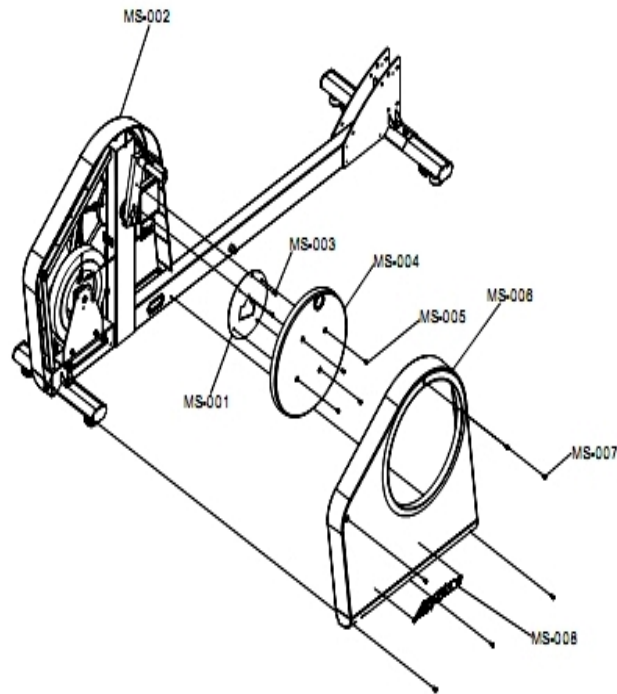
Ref #	Part Number	Qty	Description
018,CC-026			
CC-019,CC-028	REX2S4Q	3	AXLE WHEEL TRANSPORT
CC-020	REX22RP	1	NUT, NYLOCK M8 X 1.25 X 6MM THK
CC-021	REX21NS	1	BOLT, HEX HD. M8 X 1.25-60
CC-023	REX2T6K	1	GROMMET 30MM X 70MM
CC-025	REX2LNW	4	BUSHING, IGUS
CC-027	REX0K0B	4	Hardware: Cap Screw, M8 X 1.25-20
CC-029	REX0JGQ	2	CRANK KEY

## Idler and Coupler Components



Ref #	Part Number	Qty	Description
IC-001	8587001	1	SERVICE ASSY, COUPLER RT X1 LT X3
IC-002,IC-014	REX0JB7	2	WAVE WASHER; 20.5MM X 26.7MM T = 0.25MM
IC-003	REX2BKA	1	Bearing, Self-Align, 2202
IC-004	REX0JDZ	1	RING, RETAINING B-35
IC-005	REX0J4R	1	WASHER, 20MM OD X 10MM ID X 3MM THK
IC-006	REX2DVG	1	BOLT, HEX M10 X 1.5-20
IC-007	REX2RNR	1	CAP END, IDLER
IC-008	8586901	1	SERVICE ASSY, COUPLER LT X1 RT X3
IC-009	REX0HVP	8	BEARING BALL 6004ZZ
IC-010	REX0JEG	3	C-RING, A-20
IC-011	REX2RNP	1	CAP END COUPLER
IC-012	REX2MJK	1	BOLT, HEX HEAD M10 X 1.5-85
IC-013	REX2LJZ	1	AXLE, ADJ LINK
IC-015	REX2NDD	1	WASHER, SPACER
IC-016	8587101	1	SERVICE ASSY, IDLER X1 X3

## Main Shrouds and Crank Cover



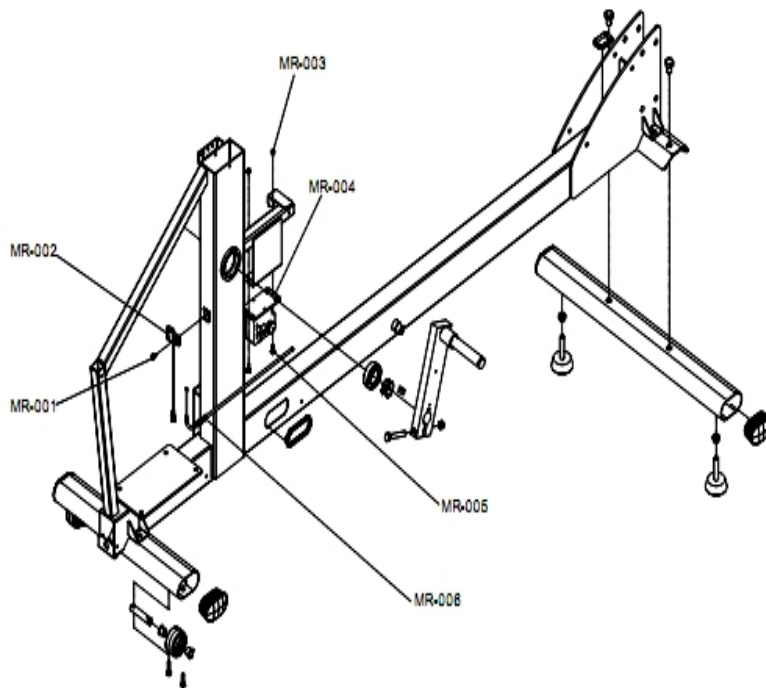
Ref #	Part Number	Qty	Description
MS-001	REX2LRT	1	PLATE; CRANK
MS-002	REX2RP5	1	SHROUD REAR LT X1 X3
MS-003	REX0K5T	4	SCREW, PHL M5 X 0.8-10
MS-004	REX2RSA	1	COVER CRANK
MS-005	REX2T9G	4	SCREW, PHL PAN M5X.8-8 CLEAR ZINC
MS-006	REX2RP4	1	SHROUD REAR RT X1 X3
MS-007	REX2T9X	12	SCREW, PHL PAN M5X.8-12 CLEAR ZINC
MS-008	REX355G	1	LABEL, LIFEFITNESS LOGO

**Miscellaneous**

---

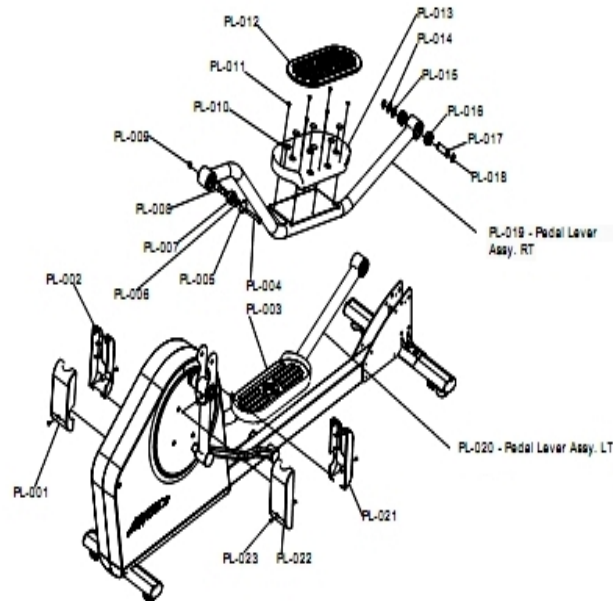
<b>Ref #</b>	<b>Part Number</b>	<b>Qty</b>	<b>Description</b>
TR-001	8974401	1	ASSY, TRANSFORMER, 100-240V, 9V, 4A, BR
TR-001	8974301	1	ASSY, TRANSFORMER, 100-240V, 9V, 4A, AUST
TR-001	8974201	1	ASSY, TRANSFORMER, 100-240V, 9V, 4A, CONT
TR-001	8974101	1	ASSY, TRANSFORMER, 100-240V, 9V, 4A, UK
TR-001	8974001	1	ASSY, TRANSFORMER, 100-240V, 9V, 4A, DOM
HB-001	8586201	1	Serv Assembly, Hardware Bag X3

## Motor, Reed Switch and Cables



Ref #	Part Number	Qty	Description
MR-001	REX0K28	1	CAP SCREW, M5 X 0.8-16
MR-002	REX01J8	1	SWITCH, REED, RPM SENSOR
MR-003	REX0KMR	2	NUT, M5 X 0.8, 4MM THK
MR-004	REX01HL	1	MOTOR, RESISTANCE DC
MR-005	REX0KEH	2	SCREW, PAN HD W/PATCH M5 X .8-16
MR-006	REX01QH	1	CABLE, BRAKE HARNESS

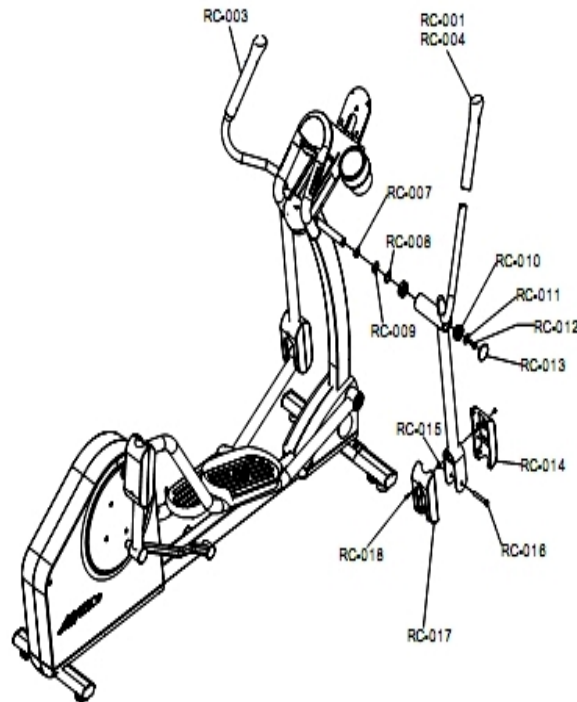
## Pedal Lever Assemblies and Components



Ref #	Part Number	Qty	Description
PL-001	REX2RNW	1	COVER, CLEVIS COUPLER REAR LT
PL-002	REX2RNV	1	COVER, CLEVIS COUPLER FRT LT
PL-003	REX2RP9	1	PEDAL LT X3
PL-004	REX2T9E	1	BOLT HEX M10X1.5-74 BLACK ZINC
PL-005	REX0JE0	1	RING, RETAINING B-40
PL-006	REX0JEE	1	RING, RETAINING A-17
PL-007	REX2BKB	1	Bearing, Self-Align, 2203
PL-008	REX2BAD	1	SHAFT, COUPLER PEDAL CONN
PL-009	REX2T9D	1	NUT HEX M10X1.5 BLACK ZINC
PL-010	REX2L4C	1	PAD VELCRO, LOOP SIDE
PL-011	REX2T9W	6	SCREW, PHL TRUSS M5X.8-8
PL-012	REX2RPB	1	INSERT, CUSION PEDAL
PL-013	REX2RP8	1	PEDAL RT X3
PL-014	REX2NDD	2	WASHER, SPACER
PL-015	REX0JB7	2	WAVE WASHER; 20.5MM X 26.7MM T = 0.25MM
PL-016	REX0HVP	4	BEARING BALL 6004ZZ
PL-017	REX2LJZ	1	AXLE, ADJ LINK
PL-018	REX0JEG	1	C-RING, A-20
PL-019	8586801	1	Service Assembly, Pedal Assembly Right X1 X3
PL-020	8586701	1	SERVICE ASSY, PEDAL ASSY LT X1 X3
PL-021	REX2RNU	1	COVER, CLEVIS COUPLER FRT RT
PL-022	REX2RNT	1	COVER, CLEVIS COUPLER REAR RT

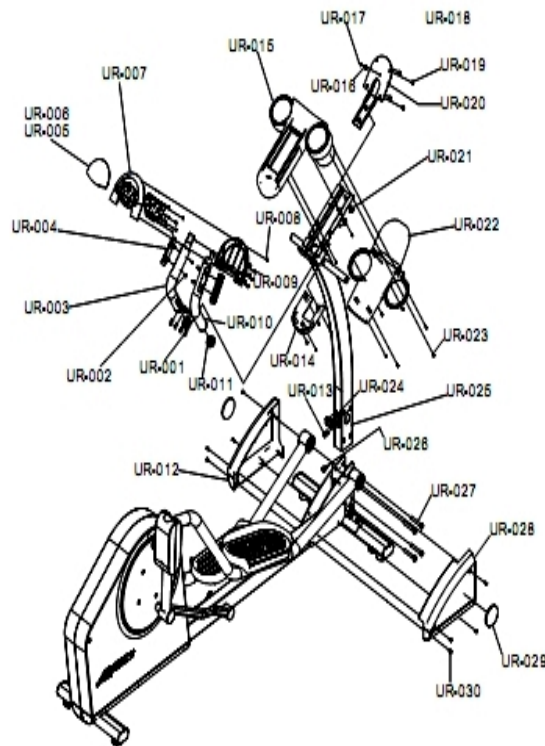
<b>Ref #</b>	<b>Part Number</b>	<b>Qty</b>	<b>Description</b>
PL-023	REX2NAK	1	SCREW, CSL PAN M5 X 0.8-8

## Rocker Arms and Clevis Covers



Ref #	Part Number	Qty	Description
RC-001	REX2RP6	2	GRIP, MOVING HANDLEBAR X3
RC-003	8586501	1	SERVICE ASSY, ROCKER LT X3
RC-004	8586601	1	SERVICE ASSY, ROCKER RT X3
RC-007	REX0JEJ	2	RING, RETAINING, 63/64
RC-008	REX0JBD	2	WAVE WASHER; 25MM X 35MM
RC-009	REX22B3	2	Hardware: Washer, .26 X 35-.8
RC-010	3225301	4	BEARING, 12MM BALL
RC-011	REX2MPQ	2	WASHER, 35MM OD X 10MM OD X 3MM THK
RC-012	REX2DVG	2	BOLT, HEX M10 X 1.5-20
RC-013	REX2RNQ	2	CAP END ROCKER PIVOT
RC-014	REX2RNX	2	COVER, CLEVIS FRONT
RC-015	REX22RR	2	NUT, NYLOCK M10 X 1.5-8
RC-016	REX2T9E	2	BOLT HEX M10X1.5-74 BLACK ZINC
RC-017	REX2RNY	2	COVER, CLEVIS REAR
RC-018	REX2NAK	4	SCREW, CSL PAN M5 X 0.8-8

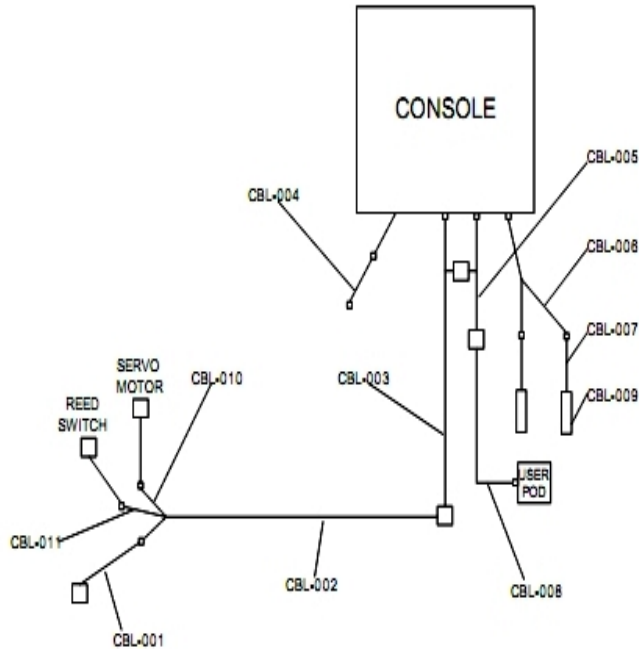
## Upright and Related Components



Ref #	Part Number	Qty	Description
UR-001	REX0K0A	4	CAP SCREW, M8 X 1.25-16
UR-002,UR-019	REX2NAG	5	SCREW, PHL PAN M3.5 X 18-12
UR-003	REX2S9J	1	HANDLEBAR, OVERMOLDED LT X3
UR-004	REX2RNF	2	SENSOR, HEART RATE
UR-005	8547201	1	OVERLAY, ACTIVITY ZONE, GER/MET
UR-006	REX2JZT	1	OVERLAY, USER POD X3 X5
UR-007	8587201	1	SERVICE ASSY, USER POD X3 X5
UR-008	REX2MJM	5	SCREW, PHL PAN M3.5 X 18-12
UR-009	REX2NAH	2	SCREW, PHL PAN M4 X 0.7-8
UR-010	REX2S9H	1	HANDLEBAR, OVERMOLDED RT X3
UR-011	REX2S9U	2	CAP END, STATIONARY ARMS
UR-012	REX2RP3	1	SHROUD, FRONT LT
UR-013	REX21NN	1	NUT, INSERT M10 X 1.5
UR-014	REX2RNN	1	COVER, CUPHOLDER REAR BOTTOM X3
UR-015	REX2RNK	1	CUPHOLDER X3
UR-016	REX0JAF	4	STAR WASHER
UR-017	REX2D1X	4	SCREW, PHL PAN M5 X 0.8-6
UR-018	REX3092	1	CABLE ASSY, GROUND
UR-020	REX2LLS	1	Bracket, Console Support
UR-021	REX2P4Q	2	BOLT, HEX M10 X 1.5-16

<b>Ref #</b>	<b>Part Number</b>	<b>Qty</b>	<b>Description</b>
UR-022	REX2RNM	1	COVER, CUPHOLDER FRONT BOTTOM X
UR-023	REX2T9J	14	SCREW, PHL PAN M3.5X20-8
UR-024	REX2S4K	1	GROMMET UPRIGHT X1
UR-025	REX2RN7	1	Weldment, Upright X3
UR-026	REX2DVG	1	BOLT, HEX M10 X 1.5-20
UR-027	REX2PJ0	4	BOLT HEX M10 X 1.5-70
UR-028	REX2RP2	1	SHROUD, FRONT RT
UR-029	REX2GD8	2	Decal: Badge, X3
UR-030	REX2T9X	8	SCREW, PHL PAN M5X.8-12 CLEAR ZINC

# Wiring Diagram



Ref #	Part Number	Qty	Description
CBL-001	REX2K86	1	CABLE, CT MOTOR-TRANSFORMER
CBL-002	REX2GHY	1	Cable, Cross-Trainer Base
CBL-003	REX30GB	1	CABLE ASSY, UPRIGHT
CBL-004	REX3092	1	CABLE ASSY, GROUND
CBL-005	REX2S61	1	WIRE HARNESS USER POD, USER POD SIDE
CBL-006	REX30GC	1	CABLE ASSY, HR SENSOR TO CONSOLE
CBL-007	REX2S5A	1	WIRE HARNESS H/R HANDLEBAR
CBL-008	REX2SG5	1	WIRE HARNESS USER POD, CONSOLE SIDE
CBL-009	REX2RNF	1	SENSOR, HEART RATE
CBL-010	REX01HL	1	MOTOR, RESISTANCE DC
CBL-011	REX01J8	1	SWITCH, REED, RPM SENSOR

