

X1 Elliptical Cross-Trainer

X1-XX00-0303

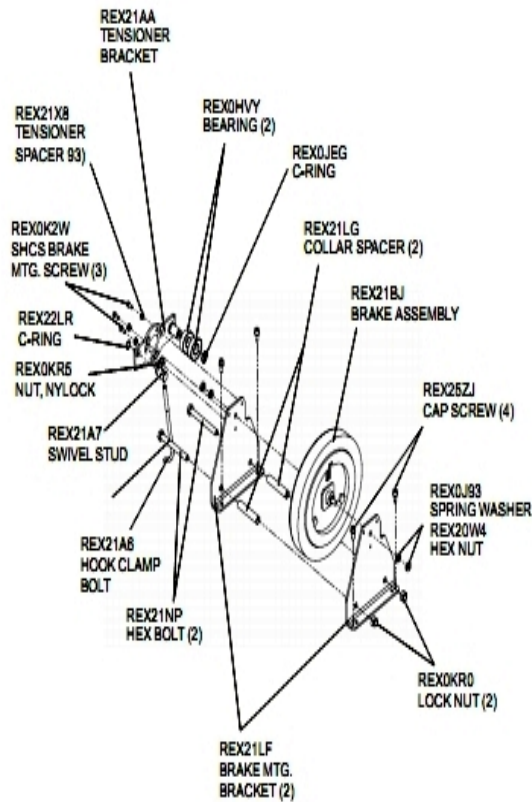
Parts Manual

2/6/2024 2:12:09 AM

Table of Contents

Brake and Tensioner Components.....	3
Consoles and Transformers.....	4
Crank Related Components.....	5
Idler and Coupler Assemblies.....	6
Main Shrouds and Crank Covers.....	7
Motor, Reed Switch and Cables.....	8
Pedal Lever Assemblies and Components.....	9
Stabilizer Components and Grommets.....	10
Uprights and Related Components.....	11
User Arm Assemblies and Components.....	12

Brake and Tensioner Components

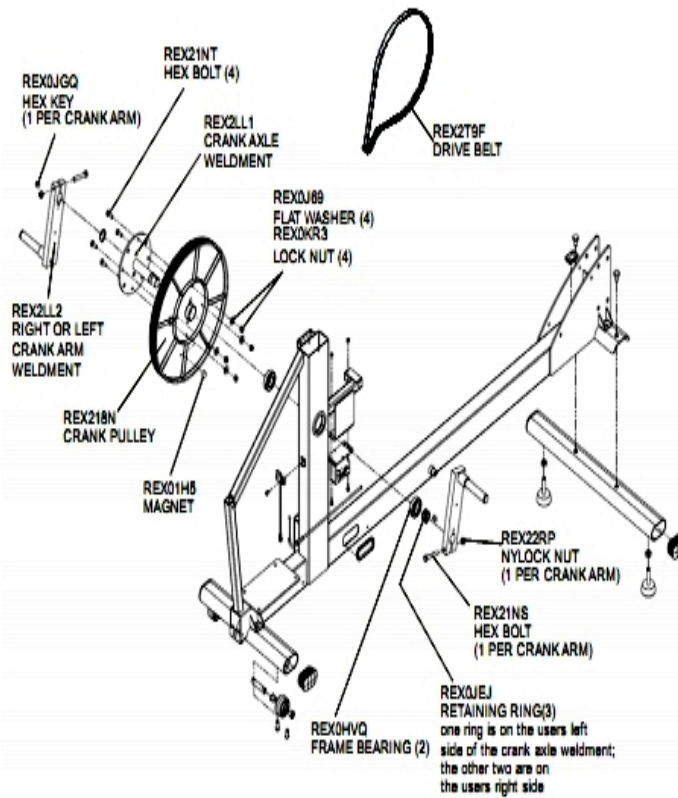


Ref #	Part Number	Qty	Description
-	REX25ZJ	4	CAP SCREW, M8 X 1.25-20
-	REX0HVV	2	BEARING, BALL 6204ZZ
-	REX0J93	1	WASHER, SPRING 1.0
-	REX0JEG	1	C-RING, A-20
-	REX0K2W	3	SCREW, SHCS BRAKE MTG
-	REX0KR0	2	NUT, LOCK M12 X 1.75-12
-	REX0KR5	1	NUT, NYLOCK M10 X 1.5, 10M THK
-	REX20W4	1	NUT, HEX M10 X 1.5-6
-	REX21A6	1	BOLT, HOOK CLAMP
-	REX21A7	1	STUD, SWIVEL
-	REX21AA	1	BRKT, BELT TENSIONER
-	REX21BJ	1	BRAKE, ASSY EDDY CURRENT
-	REX21LF	2	BRKT, BRAKE MTG
-	REX21LG	2	SPACER, COLLAR
-	REX21NP	2	BOLT, HEX HD M12 X 1.75-110
-	REX21X8	1	SPACER, TENSIONER
-	REX22LR	1	Ring: C-Ring, A-16

Consoles and Transformers

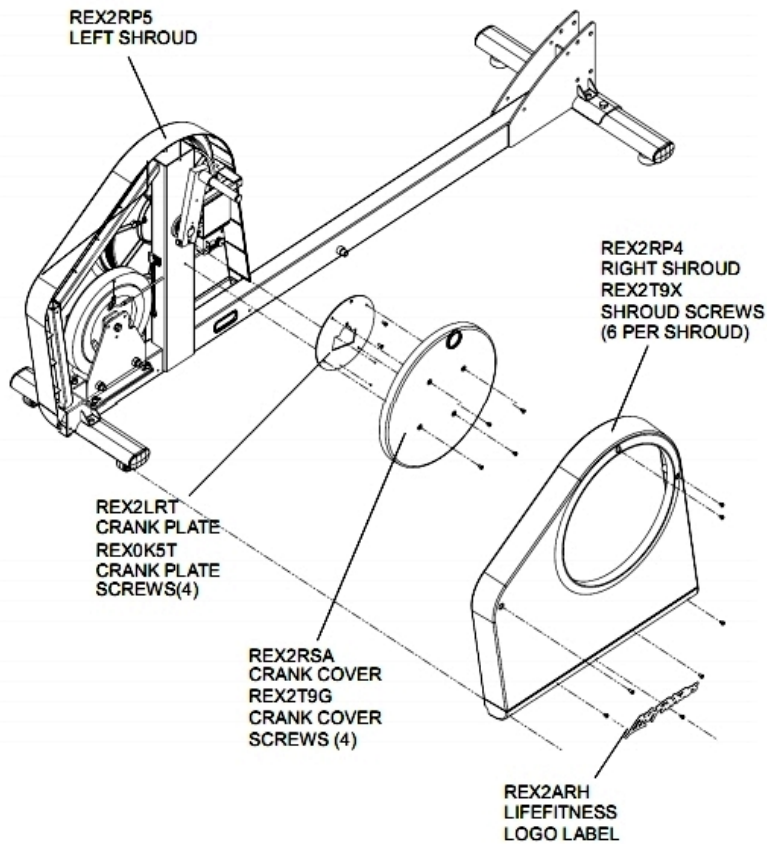
Ref #	Part Number	Qty	Description
-	8819801	1	Transformer, 100-240V, 9V, 1.5A, Domestic, W-Swite

Crank Related Components



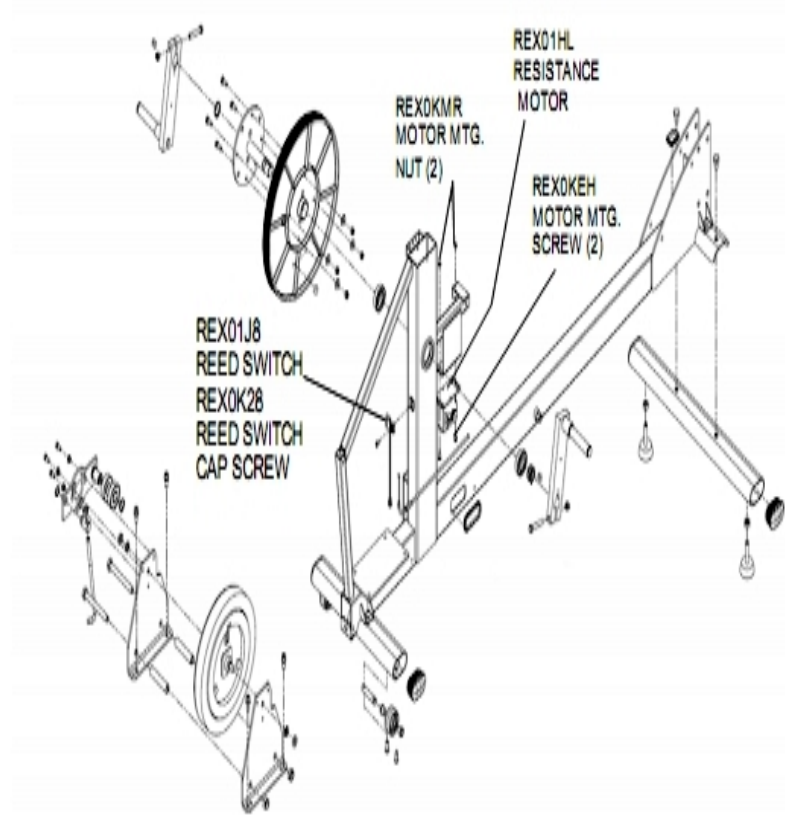
Ref #	Part Number	Qty	Description
-	REX01H5	1	MAGNET Rexon
-	REX0J69	4	WASHER, FLAT .6 X 13-1
-	REX0JEJ	3	RING, RETAINING, 63/64
-	REX0JGQ	2	CRANK KEY
-	REX2T9F	1	BELT POLY V J510
-	REX218N	1	PULLEY, CRANK
-	REX21NS	2	BOLT, HEX HD. M8 X 1.25-60
-	REX21NT	4	Hardware: Bolt, HEX HD M6 X 1-20
-	REX22RP	2	NUT, NYLOCK M8 X 1.25 X 6MM THK
-	REX2LL1	1	WLDMT, AXLE CRANK
-	REX2LL2	1	WLDMT, CRANK ARM
-	3225301	2	BEARING, 12MM BALL
-	REX0KR3	4	NUT, LOCK M6 X 1, 6MM THK

Main Shrouds and Crank Covers



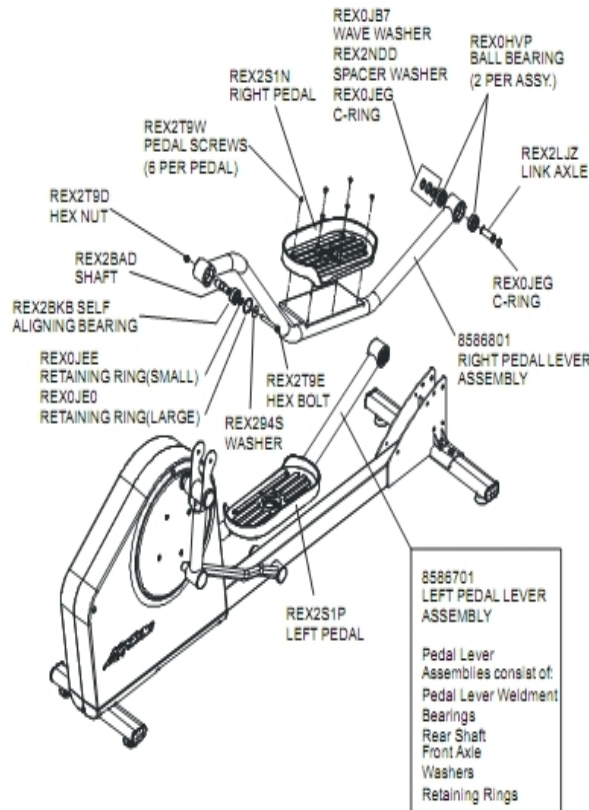
Ref #	Part Number	Qty	Description
-	REX0K5T	4	SCREW, PHL M5 X 0.8-10
-	REX2T9X	12	SCREW, PHL PAN M5X.8-12 CLEAR ZINC
-	REX2T9G	4	SCREW, PHL PAN M5X.8-8 CLEAR ZINC
-	REX2RSA	1	COVER CRANK
-	REX2RP5	1	SHROUD REAR LT X1 X3
-	REX2RP4	1	SHROUD REAR RT X1 X3
-	REX2LRT	1	PLATE; CRANK
-	REX2ARH	2	LABEL, LIFEFITNESS LOGO

Motor, Reed Switch and Cables



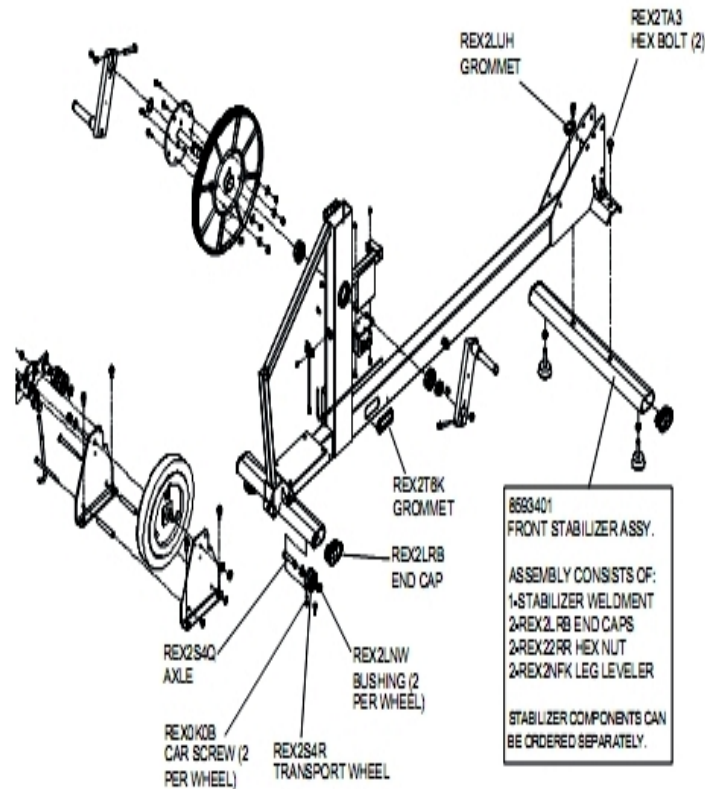
Ref #	Part Number	Qty	Description
-	REX2T9F	1	BELT POLY V J510
-	REX2K86	1	CABLE, CT MOTOR-TRANSFORMER
-	REX2GHY	1	Cable, Cross-Trainer Base
-	REX0KMR	2	NUT, M5 X 0.8, 4MM THK
-	REX0KEH	2	SCREW, PAN HD W/PATCH M5 X .8-16
-	REX0K28	1	CAP SCREW, M5 X 0.8-16
-	REX01QH	1	CABLE, BRAKE HARNESS
-	REX01J8	1	SWITCH, REED, RPM SENSOR
-	REX30GA	1	CABLE ASSY, UPRIGHT
-	REX01HL	1	MOTOR, RESISTANCE DC

Pedal Lever Assemblies and Components



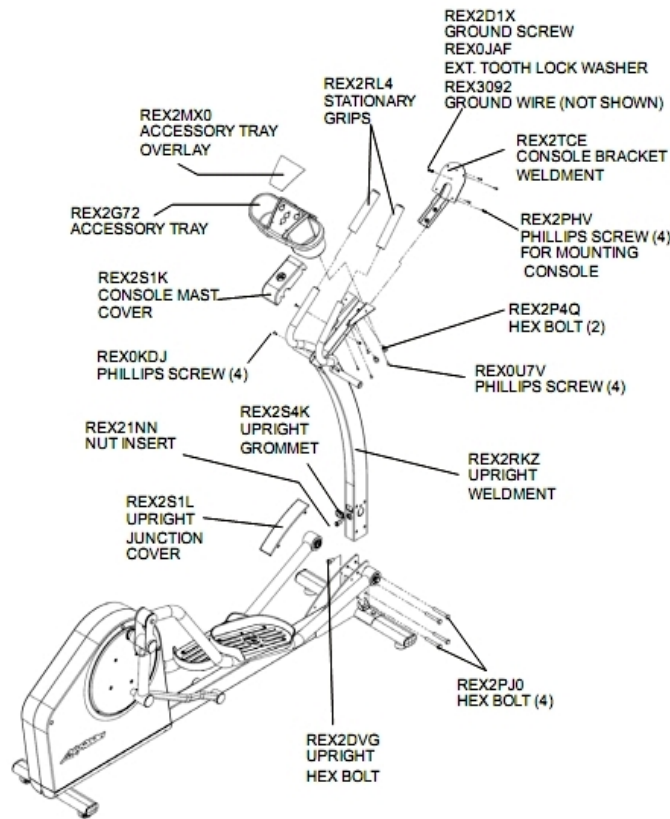
Ref #	Part Number	Qty	Description
-	8586701	1	SERVICE ASSY, PEDAL ASSY LT X1 X3
-	REX2T9W	12	SCREW, PHL TRUSS M5X.8-8
-	REX0HVP	4	BEARING BALL 6004ZZ
-	REX0JB7	2	WAVE WASHER; 20.5MM X 26.7MM T = 0.25MM
-	REX0JEO	2	RING, RETAINING B-40
-	REX0JEE	2	RING, RETAINING A-17
-	REX0JEG	4	C-RING, A-20
-	REX294S	2	WASHER, 25MM OD X 10MM ID X 3MM THK
-	REX2BAD	2	SHAFT, COUPLER PEDAL CONN
-	REX2BKB	2	Bearing, Self-Align, 2203
-	REX2LJZ	2	AXLE, ADJ LINK
-	REX2NDD	2	WASHER, SPACER
-	REX2S1N	1	PEDAL RT X1
-	REX2S1P	1	PEDAL LT X1
-	REX2T9D	2	NUT HEX M10X1.5 BLACK ZINC
-	REX2T9E	2	BOLT HEX M10X1.5-74 BLACK ZINC
-	8586801	1	Service Assembly, Pedal Assembly Right X1 X3

Stabilizer Components and Grommets



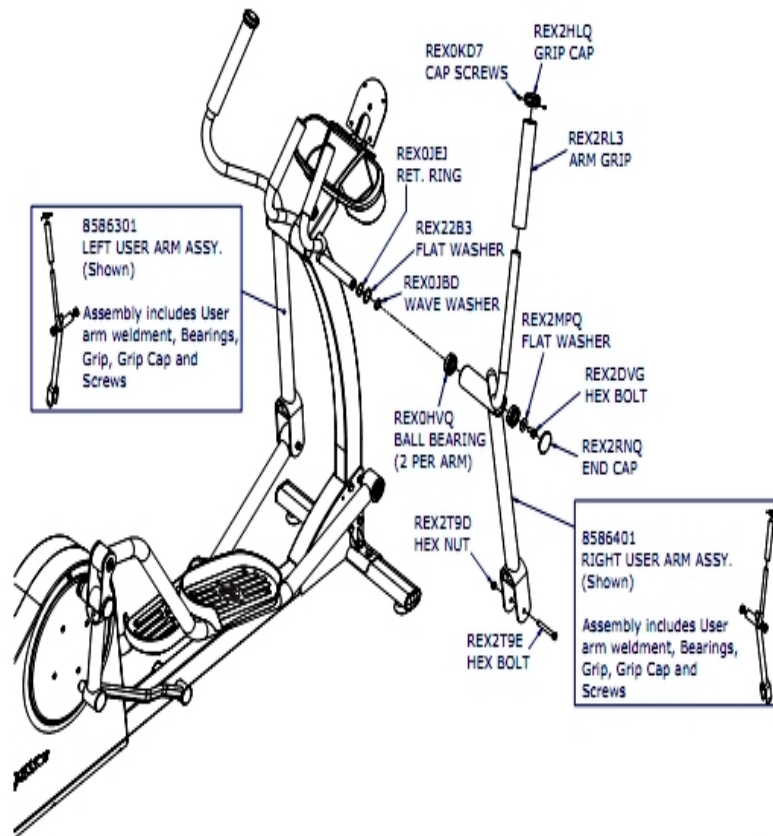
Ref #	Part Number	Qty	Description
-	8593401	1	SERVICE ASSY, STABILIZER X1
-	REX0K0B	4	Hardware: Cap Screw, M8 X 1.25-20
-	REX22RR	2	NUT, NYLOCK M10 X 1.5-8
-	REX2LNW	4	BUSHING, IGUS
-	REX2LRB	4	STABILIZER ENDCAP
-	REX2TA3	2	BOLT, HEX M10X1.5-16 CLEAR ZINC
-	REX2NFK	2	LEVELER, LEG
-	REX2S4Q	2	AXLE WHEEL TRANSPORT
-	REX2S4R	2	WHEEL TRANSPORT
-	REX2T6K	2	GROMMET 30MM X 70MM
-	REX2LUH	1	GROMMET, 38MM X 25MM

Uprights and Related Components



Ref #	Part Number	Qty	Description
-	REX0JAF	1	STAR WASHER
-	REX0KDJ	4	SCREW, PHL 5MM*.8 X 12MM
-	REX3092	1	CABLE ASSY, GROUND
-	REX2TCE	1	WLDMT, CONSOLE BRKT
-	REX2S4K	1	GROMMET UPRIGHT X1
-	REX2S1L	1	COVER UPRIGHT JUNCTION LOWER
-	REX2S1K	1	COVER CONSOLE MAST
-	REX2RL4	2	Grip Stationary Handlebar
-	REX2RKZ	1	Weldment, Upright X1
-	REX2PJO	4	BOLT HEX M10 X 1.5-70
-	REX2PHV	4	SCREW, PHL PAN M5X16-12
-	REX2P4Q	2	BOLT, HEX M10 X 1.5-16
-	REX2MX0	1	LABEL, X1 ACCESSORY TRAY
-	REX2G72	1	TRAY, ACCESSORY
-	REX2DVG	1	BOLT, HEX M10 X 1.5-20
-	REX2D1X	1	SCREW, PHL PAN M5 X 0.8-6
-	REX21NN	1	NUT, INSERT M10 X 1.5
-	REX0U7V	4	SCREW, PHL M4 X 16-16

User Arm Assemblies and Components



Ref #	Part Number	Qty	Description
-	REX2T9D	2	NUT HEX M10X1.5 BLACK ZINC
-	REX2T9E	2	BOLT HEX M10X1.5-74 BLACK ZINC
-	REX2RNQ	2	CAP END ROCKER PIVOT
-	REX2RL3	2	GRIP MOVING HANDLEBAR
-	REX2MPQ	2	WASHER, 35MM OD X 10MM OD X 3MM THK
-	REX2HLQ	2	Cap, End Hand Grip
-	REX2DVG	2	BOLT, HEX M10 X 1.5-20
-	REX22B3	2	Hardware: Washer, .26 X 35-.8
-	REX0KD7	4	SCREW, PHL PAN M4 X .7-10
-	REX0JEJ	2	RING, RETAINING, 63/64
-	REX0JBD	2	WAVE WASHER; 25MM X 35MM
-	8586601	1	SERVICE ASSY, ROCKER RT X3
-	8586501	1	SERVICE ASSY, ROCKER LT X3
-	8586401	1	Service Assembly, Rocker Right X1
-	8586301	1	Service Assembly, Rocker Left X1
-	3225301	4	BEARING, 12MM BALL
-	REX2RP6	2	GRIP, MOVING HANDLEBAR X3

