

# X1 Cross-Trainer Base DOM Cord

X1-XX00-0104

## Parts Manual

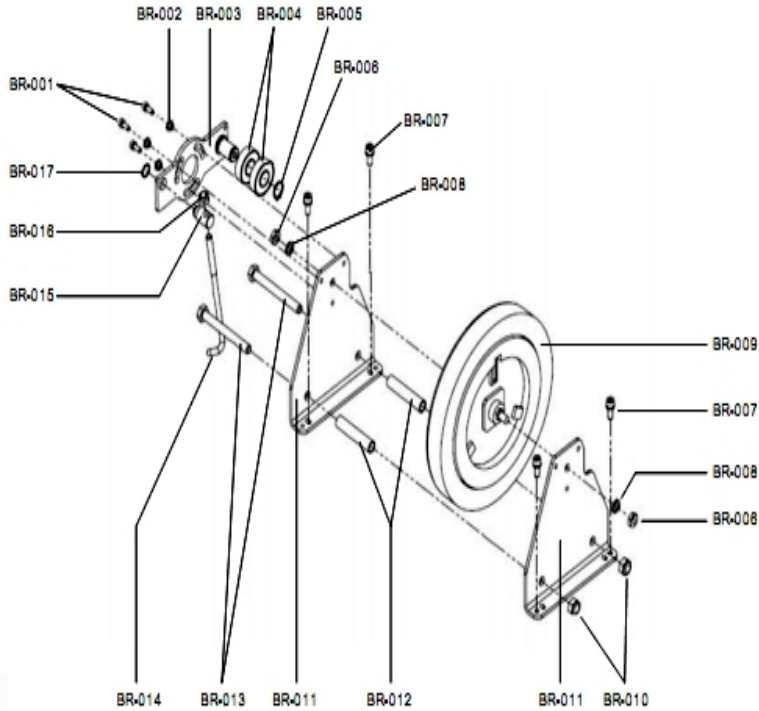
2/6/2024 2:11:58 AM

## Table of Contents

---

<a href="#">Brake and Tensioner Components.....</a>	<a href="#">3</a>
<a href="#">Console.....</a>	<a href="#">4</a>
<a href="#">Crank Related Components.....</a>	<a href="#">5</a>
<a href="#">Idler Coupler Assemblies.....</a>	<a href="#">6</a>
<a href="#">Main Shrouds and Crank Covers.....</a>	<a href="#">7</a>
<a href="#">Miscellaneous.....</a>	<a href="#">8</a>
<a href="#">Motor, Reed Switch and Cables.....</a>	<a href="#">9</a>
<a href="#">Pedal Lever Assemblies and Components.....</a>	<a href="#">10</a>
<a href="#">Stabilizer Components and Grommets.....</a>	<a href="#">11</a>
<a href="#">Uprights and Related Components.....</a>	<a href="#">12</a>
<a href="#">User Arm Assemblies and Components.....</a>	<a href="#">13</a>
<a href="#">Wiring Diagram.....</a>	<a href="#">14</a>

## Brake and Tensioner Components



Ref #	Part Number	Qty	Description
BR-001	REX0K2W	6	SCREW, SHCS BRAKE MTG
BR-002	REX21X8	6	SPACER, TENSIONER
BR-003	REX3535	2	BRKT, BELT TENSOR
BR-004	REX0HVY	4	BEARING, BALL 6204ZZ
BR-005	REX0JEG	2	C-RING, A-20
BR-006	REX20W4	4	NUT, HEX M10 X 1.5-6
BR-007	REX25ZJ	8	CAP SCREW, M8 X 1.25-20
BR-008	REX0J93	2	WASHER, SPRING 1.0
BR-009	REX21BJ	2	BRAKE, ASSY EDDY CURRENT
BR-010	REX0KR0	4	NUT, LOCK M12 X 1.75-12
BR-011	REX21LF	4	BRKT, BRAKE MTG
BR-012	REX21LG	4	SPACER, COLLAR
BR-013	REX21NP	4	BOLT, HEX HD M12 X 1.75-110
BR-014	REX21A6	2	BOLT, HOOK CLAMP
BR-015	REX21A7	2	STUD, SWIVEL
BR-017	REX22LR	2	Ring: C-Ring, A-16

## Console

---



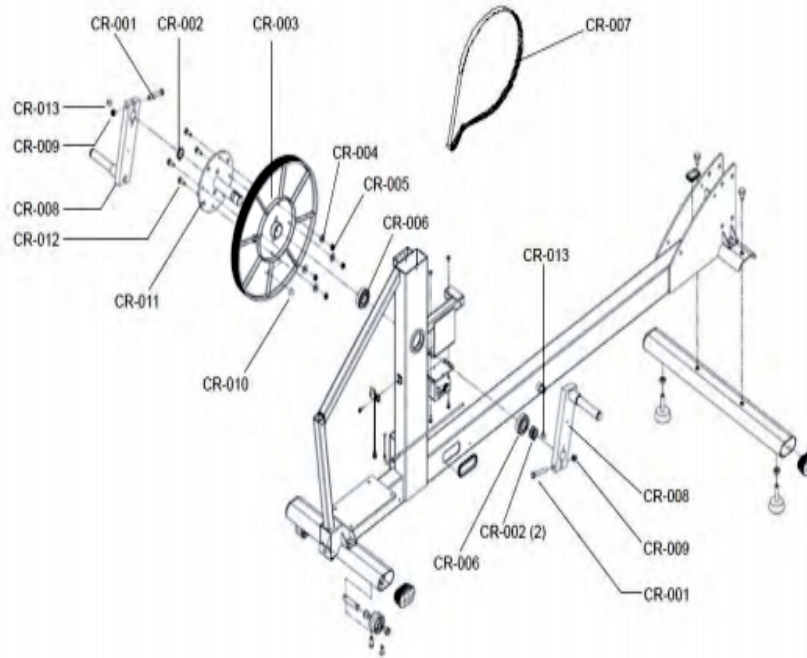
CN-001



CN-002

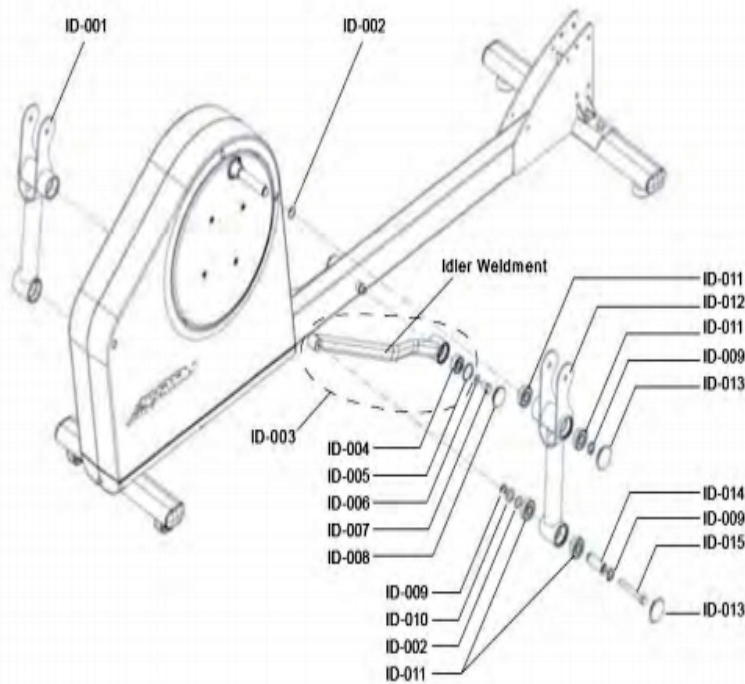
Ref #	Part Number	Qty	Description
CN-001	GC-000X-0104	2	GO CT/BIKE CONSOLE, ENG/ENG+MET
CN-001	GC-020X-0104	2	GO CT/BIKE CONSOLE, GER/MET
CN-001	GC-040X-0104	2	GO CT/BIKE CONSOLE, SPN/MET
CN-002	TKC-000X-0104	2	TRACK CT/BIKE CONSOLE, ENG/ENG+MET
CN-002	TKC-020X-0104	2	TRACK CT/BIKE CONSOLE, GER/MET

## Crank Related Components



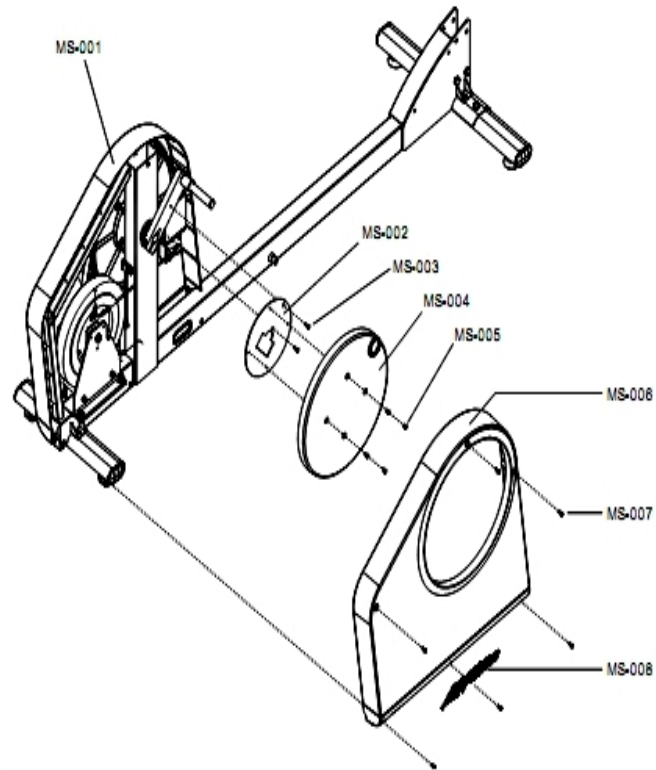
Ref #	Part Number	Qty	Description
CR-001	REX21NS	2	BOLT, HEX HD. M8 X 1.25-60
CR-002	REX0JEJ	6	RING, RETAINING, 63/64
CR-003	REX218N	2	PULLEY, CRANK
CR-004	REX0J69	8	WASHER, FLAT .6 X 13-1
CR-005	REX0KR3	8	NUT, LOCK M6 X 1, 6MM THK
CR-006	3225301	4	BEARING, 12MM BALL
CR-007	REX2T9F	2	BELT POLY V J510
CR-008	REX2LL2	2	WLDMT, CRANK ARM
CR-009	REX22RP	2	NUT, NYLOCK M8 X 1.25 X 6MM THK
CR-010	REX01H5	2	MAGNET Rexon
CR-011	REX2LL1	2	WLDMT, AXLE CRANK
CR-012	REX21NT	8	Hardware: Bolt, HEX HD M6 X 1-20
CR-013	REX0JGQ	2	CRANK KEY

## Idler Coupler Assemblies



Ref #	Part Number	Qty	Description
ID-001	8586901	2	SERVICE ASSY, COUPLER LT X1 RT X3
ID-002	REX0JB7	2	WAVE WASHER; 20.5MM X 26.7MM T = 0.25MM
ID-003	8587101	2	SERVICE ASSY, IDLER X1 X3
ID-004	REX2BKA	2	Bearing, Self-Align, 2202
ID-005	REX0JDZ	2	RING, RETAINING B-35
ID-006	REX0J4R	2	WASHER, 20MM OD X 10MM ID X 3MM THK
ID-007	REX2DVG	2	BOLT, HEX M10 X 1.5-20
ID-008	REX2RNR	2	CAP END, IDLER
ID-009	REX0JEG	2	C-RING, A-20
ID-010	REX2NDD	2	WASHER, SPACER
ID-011	REX0HVP	8	BEARING BALL 6004ZZ
ID-012	8587001	2	SERVICE ASSY, COUPLER RT X1 LT X3
ID-013	REX2RNP	4	CAP END COUPLER
ID-014	REX2LJZ	2	AXLE, ADJ LINK
ID-015	REX2MJK	2	BOLT, HEX HEAD M10 X 1.5-85

## Main Shrouds and Crank Covers



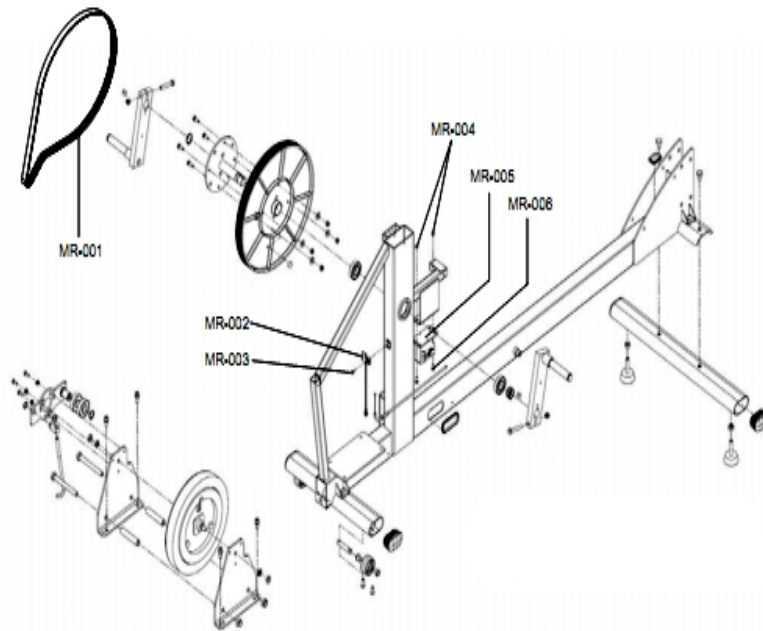
Ref #	Part Number	Qty	Description
MS-001	REX2RP5	2	SHROUD REAR LT X1 X3
MS-002	REX2LRT	2	PLATE; CRANK
MS-003	REX0K5T	4	SCREW, PHL M5 X 0.8-10
MS-004	REX2RSA	2	COVER CRANK
MS-005	REX2T9G	8	SCREW, PHL PAN M5X.8-8 CLEAR ZINC
MS-006	REX2RP4	2	SHROUD REAR RT X1 X3
MS-007	REX2T9X	12	SCREW, PHL PAN M5X.8-12 CLEAR ZINC
MS-008	REX355G	4	LABEL, LIFEFITNESS LOGO

**Miscellaneous**

---

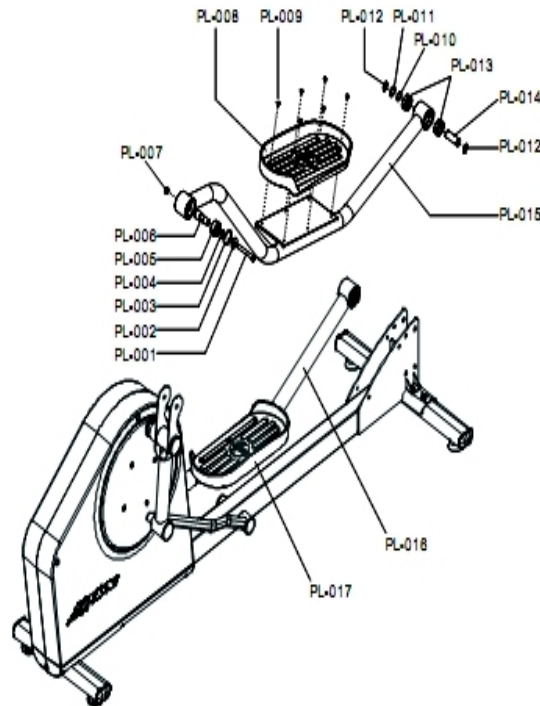
<b>Ref #</b>	<b>Part Number</b>	<b>Qty</b>	<b>Description</b>
TR-001	8974101	2	ASSY, TRANSFORMER, 100-240V, 9V, 4A, UK
TR-001	8974001	2	ASSY, TRANSFORMER, 100-240V, 9V, 4A, DOM
TR-001	8974201	2	ASSY, TRANSFORMER, 100-240V, 9V, 4A, CONT
TR-001	8974401	2	ASSY, TRANSFORMER, 100-240V, 9V, 4A, BR
TR-001	8974301	2	ASSY, TRANSFORMER, 100-240V, 9V, 4A, AUST

## Motor, Reed Switch and Cables



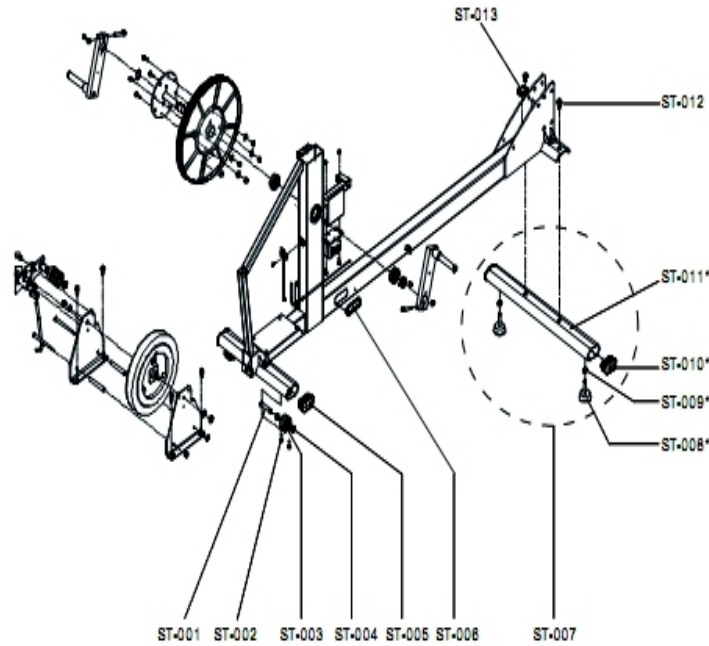
Ref #	Part Number	Qty	Description
MR-001	REX2T9F	2	BELT POLY V J510
MR-002	REX01J8	2	SWITCH, REED, RPM SENSOR
MR-003	REX0K28	2	CAP SCREW, M5 X 0.8-16
MR-004	REX0KMR	4	NUT, M5 X 0.8, 4MM THK
MR-005	REX01HL	2	MOTOR, RESISTANCE DC
MR-006	REX0KEH	4	SCREW, PAN HD W/PATCH M5 X .8-16
MR-007	REX30GA	2	CABLE ASSY, UPRIGHT
MR-008	REX2GHY	2	Cable, Cross-Trainer Base
MR-010	REX01QH	2	CABLE, BRAKE HARNESS

## Pedal Lever Assemblies and Components



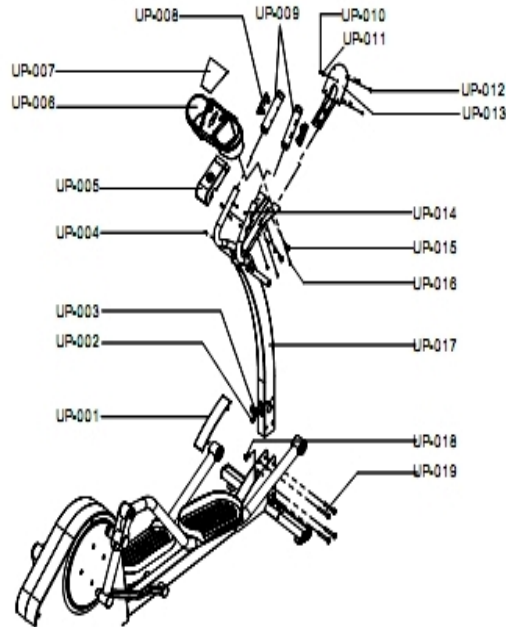
Ref #	Part Number	Qty	Description
PL-001	REX2T9E	2	BOLT HEX M10X1.5-74 BLACK ZINC
PL-002	REX294S	2	WASHER, 25MM OD X 10MM ID X 3MM THK
PL-003	REX0JE0	2	RING, RETAINING B-40
PL-004	REX0JEE	2	RING, RETAINING A-17
PL-005	REX2BKB	2	Bearing, Self-Align, 2203
PL-006	REX2BAD	2	SHAFT, COUPLER PEDAL CONN
PL-007	REX2T9D	2	NUT HEX M10X1.5 BLACK ZINC
PL-008	REX2S1N	2	PEDAL RT X1
PL-009	REX2T9W	12	SCREW, PHL TRUSS M5X.8-8
PL-010	REX0JB7	2	WAVE WASHER; 20.5MM X 26.7MM T = 0.25MM
PL-011	REX2NDD	2	WASHER, SPACER
PL-012	REX0JEG	2	C-RING, A-20
PL-013	REX0HVP	4	BEARING BALL 6004ZZ
PL-014	REX2LJZ	2	AXLE, ADJ LINK
PL-015	8586801	2	Service Assembly, Pedal Assembly Right X1 X3
PL-016	8586701	2	SERVICE ASSY, PEDAL ASSY LT X1 X3
PL-017	REX2S1P	2	PEDAL LT X1

## Stabilizer Components and Grommets



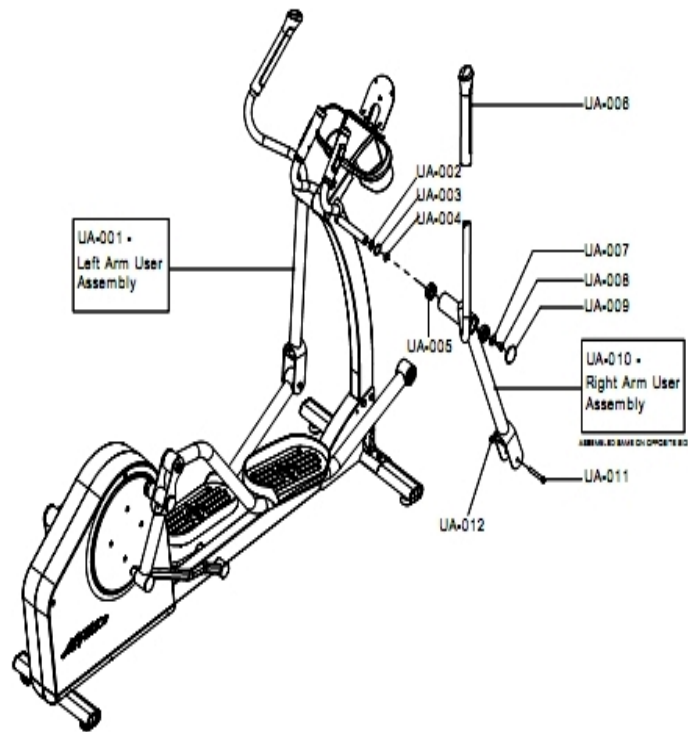
Ref #	Part Number	Qty	Description
ST-001	REX2S4Q	2	AXLE WHEEL TRANSPORT
ST-002	REX0K0B	8	Hardware: Cap Screw, M8 X 1.25-20
ST-003	REX2S4R	2	WHEEL TRANSPORT
ST-004	REX2LNW	8	BUSHING, IGUS
ST-005,ST-010	REX2LRB	8	STABILIZER ENDCAP
ST-006	REX2T6K	2	GROMMET 30MM X 70MM
ST-007	8593401	2	SERVICE ASSY, STABILIZER X1
ST-008	REX2NFK	4	LEVELER, LEG
ST-009	REX22RR	4	NUT, NYLOCK M10 X 1.5-8
ST-011	REX2RNZ	2	WLDMT, STABILIZER X1
ST-012	REX2TA3	4	BOLT, HEX M10X1.5-16 CLEAR ZINC
ST-013	REX2LUH	2	GROMMET, 38MM X 25MM

## Uprights and Related Components



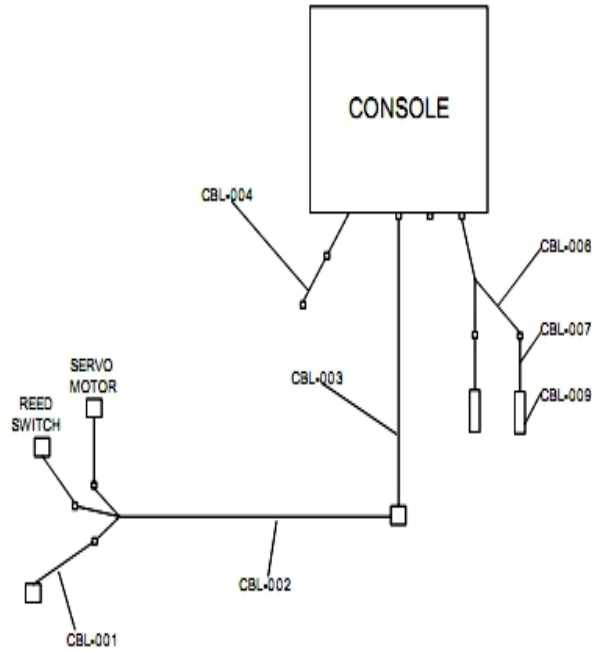
Ref #	Part Number	Qty	Description
UP-001	REX2S1L	2	COVER UPRIGHT JUNCTION LOWER
UP-002	REX21NN	2	NUT, INSERT M10 X 1.5
UP-003	REX2S4K	2	GROMMET UPRIGHT X1
UP-004	REX0KDJ	8	SCREW, PHL 5MM*.8 X 12MM
UP-005	REX2S1K	2	COVER CONSOLE MAST
UP-006	REX348Q	2	CUPHOLDER SDW
UP-007	REX2MX0	2	LABEL, X1 ACCESSORY TRAY
UP-008	REX2B92	4	Sensor, Heart Rate
UP-009	REX355D	4	GRIP STATIONARY HANDLEBAR X1
UP-009	REX2LQH	2	CABLE, UPPER, HR SENSOR TO CONSOLE
UP-009	REX2S5A	2	WIRE HARNESS H/R HANDLEBAR
UP-010	REX2D1X	2	SCREW, PHL PAN M5 X 0.8-6
UP-011	REX0JAF	2	STAR WASHER
UP-011	REX3092	2	CABLE ASSY, GROUND
UP-012	REX2PHV	8	SCREW, PHL PAN M5X16-12
UP-013	REX2TCE	2	WLDMT, CONSOLE BRKT
UP-014	REXDE08	2	SCREW, HR SENSOR MTG
UP-015	REX2P4Q	4	BOLT, HEX M10 X 1.5-16
UP-016	REX0U7V	8	SCREW, PHL M4 X 16-16
UP-017	REX355F	2	WLDMT, UPRIGHT X1
UP-018	REX2DVG	2	BOLT, HEX M10 X 1.5-20
UP-019	REX2PJ0	8	BOLT HEX M10 X 1.5-70

## User Arm Assemblies and Components



Ref #	Part Number	Qty	Description
UA-001	8586501	2	SERVICE ASSY, ROCKER LT X3
UA-002	REX0JEJ	2	RING, RETAINING, 63/64
UA-003	REX22B3	2	Hardware: Washer, .26 X 35-.8
UA-004	REX0JBD	2	WAVE WASHER; 25MM X 35MM
UA-005	3225301	8	BEARING, 12MM BALL
UA-006	REX2RP6	2	GRIP, MOVING HANDLEBAR X3
UA-007	REX2MPQ	2	WASHER, 35MM OD X 10MM OD X 3MM THK
UA-008	REX2DVG	2	BOLT, HEX M10 X 1.5-20
UA-009	REX2RNQ	2	CAP END ROCKER PIVOT
UA-010	8586601	2	SERVICE ASSY, ROCKER RT X3
UA-011	REX2T9E	2	BOLT HEX M10X1.5-74 BLACK ZINC
UA-012	REX2T9D	2	NUT HEX M10X1.5 BLACK ZINC

# Wiring Diagram



Ref #	Part Number	Qty	Description
CBL-001	REX2K86	2	CABLE, CT MOTOR-TRANSFORMER
CBL-002	REX2GHY	2	Cable, Cross-Trainer Base
CBL-003	REX30GA	2	CABLE ASSY, UPRIGHT
CBL-004	REX3092	2	CABLE ASSY, GROUND
CBL-006	REX30GC	2	CABLE ASSY, HR SENSOR TO CONSOLE
CBL-007	REX2S5A	2	WIRE HARNESS H/R HANDLEBAR
CBL-009	REX2B92	4	Sensor, Heart Rate
CBL-010	REX01HL	2	MOTOR, RESISTANCE DC
CBL-011	REX01J8	2	SWITCH, REED, RPM SENSOR

