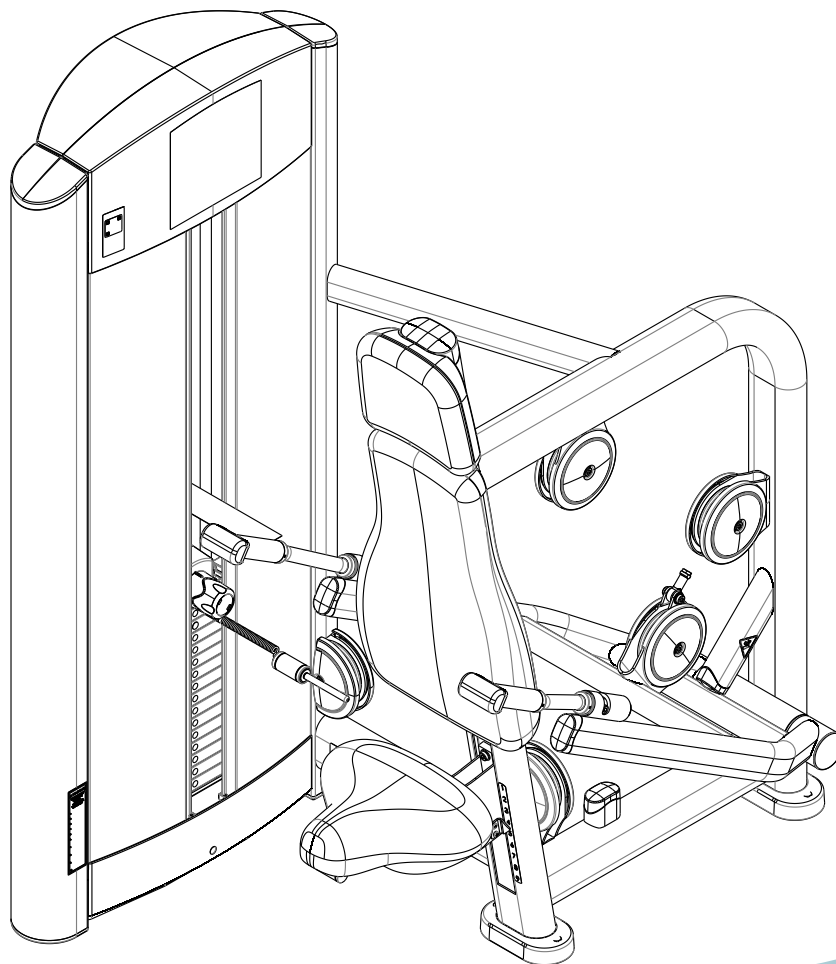


Signature Series Single Station Triceps Press

FZTP

Parts List



LifeFitness
WHAT WE LIVE FOR

FZTP TRICEPS PRESS

CONTENTS

FRAME AND UPHOLSTERY COLORS..... 3

SHROUD OPTIONS..... 4

COMPONENT ASSEMBLY..... 5

COMPONENT ASSEMBLY II..... 6

COMPONENT ASSEMBLY LEGEND..... 7

SEAT CARRIAGE ASSEMBLY..... 8

ADJUSTER HANDLE ASSEMBLY..... 9

MID-14 TOWER ASSEMBLY..... 10

STANDARD PLASTIC TOWER ASSEMBLY..... 11

OPTIONAL WRAPPED SHROUDS..... 12

MID-14 WEIGHT STACK ASSEMBLY..... 13

5 LB. INCREMENT WEIGHT ASSEMBLY..... 14

10 LB. INCREMENT WEIGHT ASSEMBLY..... 15

15 LB. INCREMENT WEIGHT ASSEMBLY..... 16

OPTIONAL MID-14 WEIGHT STACK ASSEMBLY..... 17

OPTIONAL 2.5 LB. INCREMENT WEIGHT ASSEMBLY..... 18

OPTIONAL 5 LB. INCREMENT WEIGHT ASSEMBLY..... 19

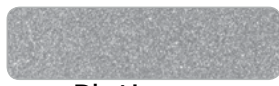
OPTIONAL 7.5 LB. INCREMENT WEIGHT ASSEMBLY..... 20

HEAD PLATE ASSEMBLY..... 21

IMAGE..... 22

FZTP TRICEPS PRESS FRAME AND UPHOLSTERY COLORS

Strength Frame Colors



Platinum



White



Black



Ice Blue Metallic



Midnight Metallic



Nickel



Blue



Red



Yellow



Candy Apple Red

Note: Include frame color in pick-slip notes when ordering frame assemblies or weldments.

Strength Upholstery Colors



American Beauty Red 07



Azure 20



Black 01



Cranberry 04



Graphite 22



Hunter Green 13



Regimental Blue 14



Royal Blue 02



Slate 03



Wheat 21



Burgundy 29



Candy Apple Red 28



Chestnut 34



Concord 16



Crocus 19



Dove Gray 37



Emerald 27



Grotto 25



Gun Metal 39



Imperial Blue 33



Jade 26



Navy 32



Northwoods Green 05



Paprika 35



Plum 30



Putty 38



Space Blue 06



Suede 08



Terra Cotta 36

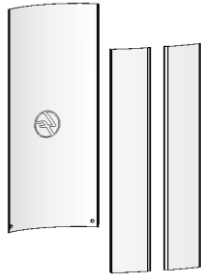


Turquoise 17

Note: Replace XX with above color suffix when ordering pads (ie. 74123XX = 7412301 Black)
Use 99 suffix for custom upholstery.

FZTP TRICEPS PRESS SHROUD OPTIONS

STANDARD SHROUD NO WRAP

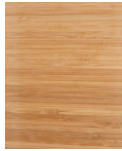


TRANSLUCENT

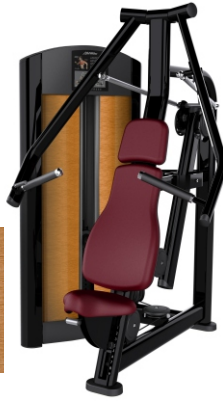


OPTIONAL StackWraps™ SHROUD + WRAP

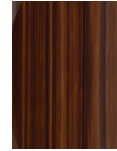
BAMBOO



BRONZE



ROSEWOOD



SKY



STAINLESS STEEL



STEM



CO-BRANDED StackWraps™ SHROUD + WRAP

SHROUD + WRAP

(refer to co-branded parts list)



PLANET FITNESS

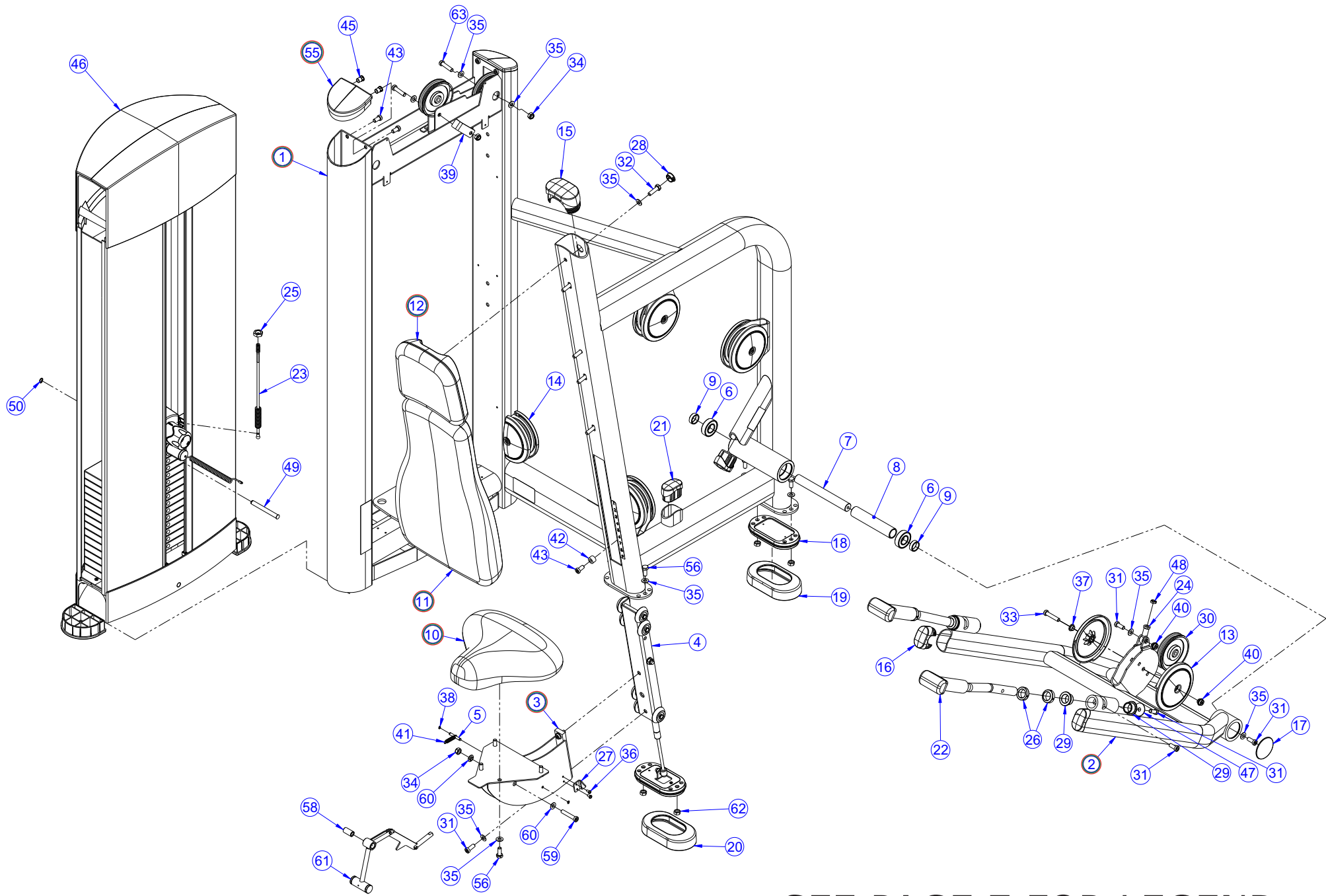


BLINK FITNESS



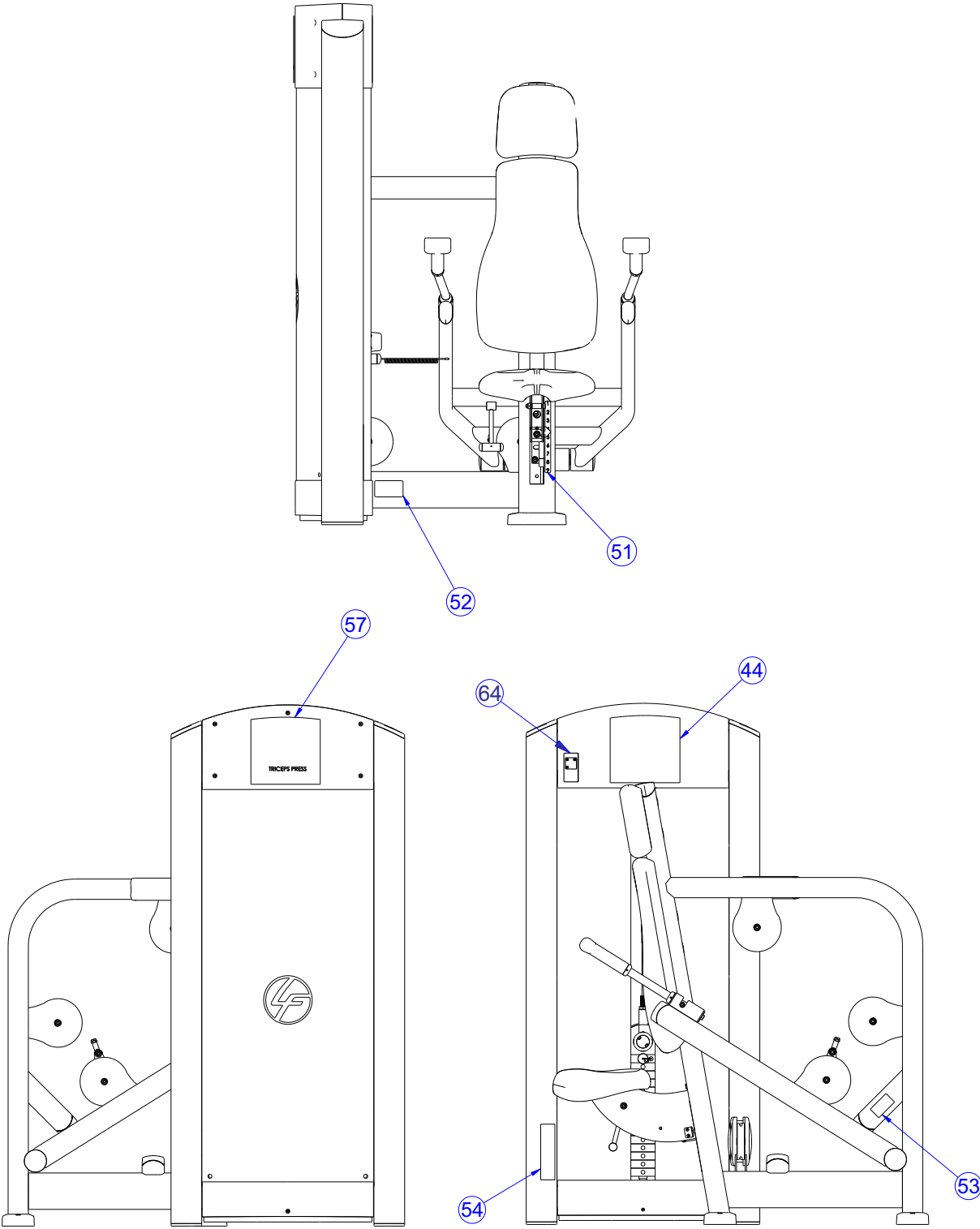
RETRO FITNESS

FZTP TRICEPS PRESS COMPONENT ASSEMBLY



SEE PAGE 7 FOR LEGEND

FZTP TRICEPS PRESS COMPONENT ASSEMBLY II

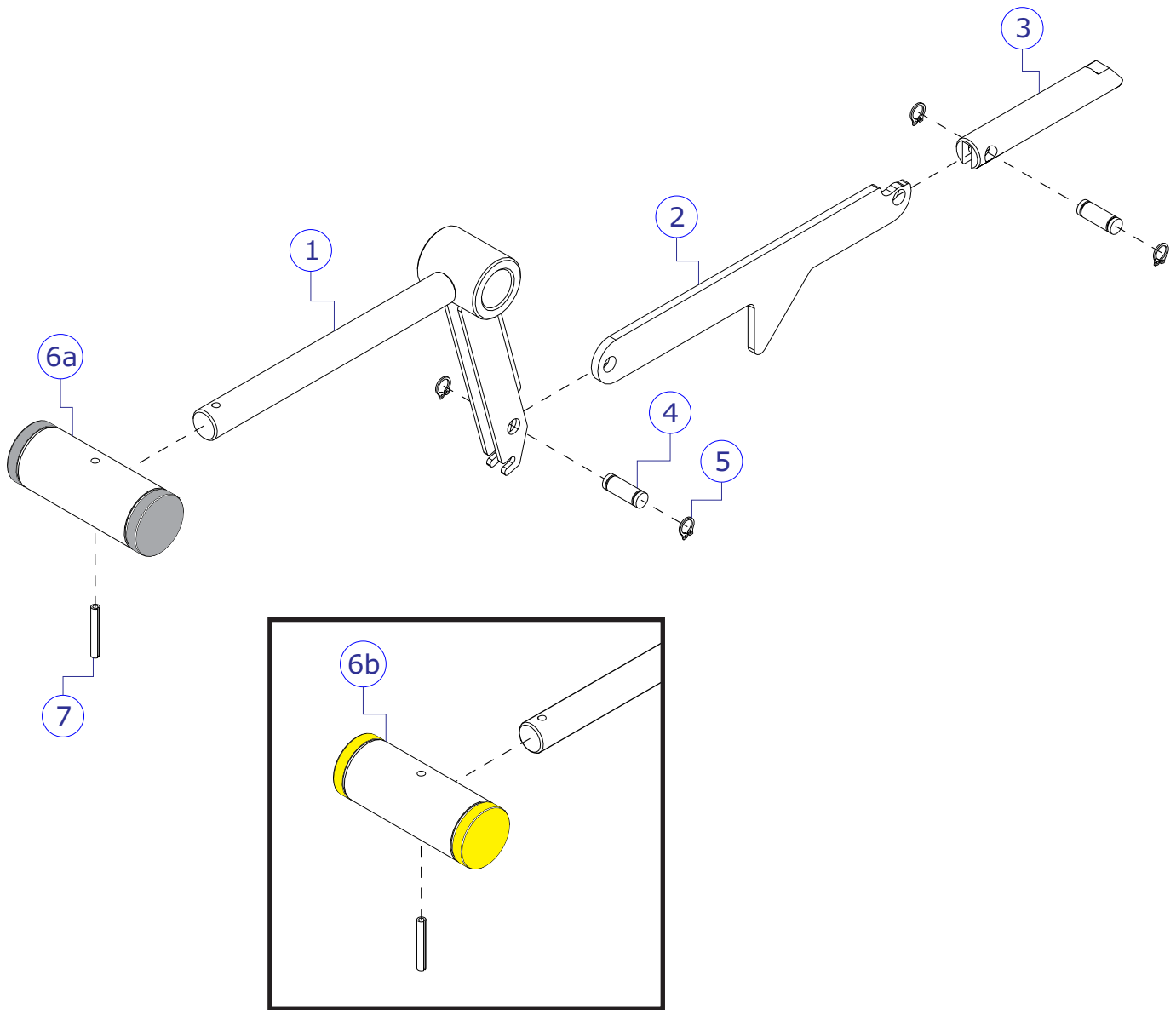


SEE PAGE 7 FOR LEGEND

FZTP TRICEPS PRESS COMPONENT ASSEMBLY LEGEND

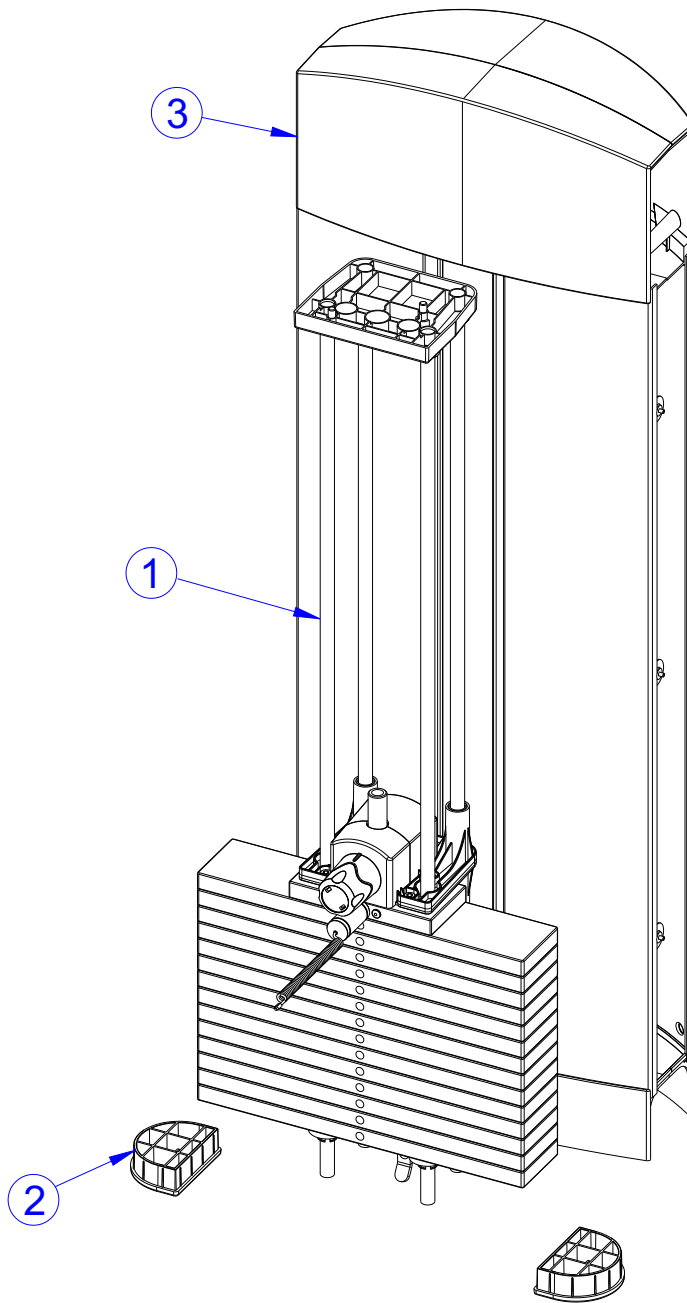
ITEM NO.	QTY.	PART NO.	DESCRIPTION	COLOR
1	1		WLDMT, FZTP FRAME	ANY
2	1	7344601	WLDMT, FZTP PRESS ARM	ANY
3	1	7360301	WLDMT, SEAT SUPPORT	ANY
4	1	7911101	ASSY, SEAT CARRIAGE	-
5	1	7407502	PIN, LINK	-
6	2	3235601	BEARING, 6205 BALL	-
7	1	7316504	SHAFT, 25MM X 8.250	-
8	1	7330005	SPACER, INTERNAL X 6.265	-
9	2	7330001	SPACER, INTERNAL X .403	-
10	1	72971XX	PAD, SEAT SADDLE	ANY
11	1	74741XX	PAD, LARGE BACK	ANY
12	1	74743XX	PAD, HEAD REST	ANY
13	8	8104501	COVER, PULLEY-BOLTED NOTCHED	-
14	2	8094101	COVER, PULLEY-BOLTED PARTIAL	-
15	1	7333901	CAP, LARGE FLOV- END	-
16	2	7333801	CAP, SMALL FLOV- END	-
17	2	7308701	CAP, BEARING HOUSING	-
18	1	7334001	FOOT, 2.50 X 4.49 FLOV	-
19	1	7340201	COVER, FOOT - STRAIGHT	-
20	1	7419701	COVER, FOOT 10 DEG	-
21	2	7317901	STOP, BUMPER	-
22	2	7412301	ASSY, TRICEPS HANDLE	-
23	1	7423605	CABLE, FZTP	-
24	1	3237901	ROD END, METRIC FEMALE	-
25	1	3236902	NUT, M16 X 2 HEX JAM SS	-
26	4	7662802	RING, GRIP 1.50 OD	-
27	1	7425295	BRKT, SEAT INDICATOR	-
28	5	3237403	PLUG, 1" HOLE	-
29	4	3104903	1.00" ID 1.25" OD BRONZ BUSHING	-
30	7	3237801	PULLEY, 4.5" OD	-
31	9	3236202	SCREW, M10 X1.5 25MM	-
32	5	3251203	SCREW, M10 X1.5 X 30MM HEX ST	-
33	5	3236207	SCREW, M10 X1.5 50MM	-
34	3	3236801	NUT, M10 HEX NYLOCK SS	-
35	21	3236601	WASHER, 3/8 SAE SS	-
36	2	3239101	SCREW, M5X10 PHL PAN TT ST	-
37	5	7630101	RETAINER, CM/MJ, PULLEY	-
38	2	3232401	RING, RETAINING, EXTERNAL	-
39	1	6757701	CLIP, CABLE 2-7/8 X 1 X 1	-
40	6	7335401	NUT, M10 X 1.5 SOCKET HEAD	-
41	1	3273101	SPRING, EXT, .50 X .067 X 2.00	-
42	1	7385203	SPACER, .406 X .750 X .500	-
43	5	3236201	SCREW, M10 X1.5 20MM	-
44	1	7507301	LABEL, FZTP PLACARD ENG	-
		7507302	LABEL, FZTP PLACARD GER	-
		7507303	LABEL, FZTP PLACARD FRN	-
		7507304	LABEL, FZTP PLACARD SPN	-
		7507305	LABEL, FZTP PLACARD ITL	-
		7507306	LABEL, FZTP PLACARD DUT	-
		7507307	LABEL, FZTP PLACARD JAP	-
		7507308	LABEL, FZTP PLACARD POR	-
		7507309	LABEL, FZTP PLACARD SWE	-
7507310	LABEL, FZTP PLACARD RUS	-		
45	4	3238601	M10X1.5 THREADED INSERT (HEX)	-
46	1	SEE PAGE 10	ASSY, MID TOWER-14	-
47	2	3236701	WASHER, 3/8" ID X 1.5" OD SS	-
48	1	3236901	NUT, M10 X 1.5 JAM	-
49	1	7564501	PIN, FZ/PS, WEIGHT PLATE	-
50	1	3243901	RING, BRE M11, ST, PP	-
51	1	7524501	LABEL, 1-9 STRAIGHT	-
52	1	7571301	LABEL, SERIAL NUMBER	-
53	1	7422003	LABEL, MOVING PARTS	-
54	1	7422004	LABEL, 2" ASTM WARN	-
55	2	7326201	CAP, D-TUBE - TOP	ANY
56	8	3251202	SCREW, M10 X1.5 X 25MM HEX ST	-
57	1	7507401	LABEL, FZTP LOGO	-
58	1	7776501	SHAFT, .625 X .406 X 1.200	-
59	1	3236208	SCREW, M10 X1.5 55MM	-
60	2	7776401	SPACER, FLANGE .406 X .495 X .81	-
61	1	7778001	ASSY, FZ ADJUSTER HANDLE -GRAY	-
		7778003	ASSY, FZ ADJUSTER HANDLE -YELLOW	-
62	4	3254703	NUT, M10 X 1.5 HEX ZINC	-
63	2	3236206	SCREW, M10 X1.5 45MM	-
64	1	9311601	LABEL, FZTP, NFC-QR TAG	-

FZTP TRICEPS PRESS ADJUSTER HANDLE ASSEMBLY - 77780XX



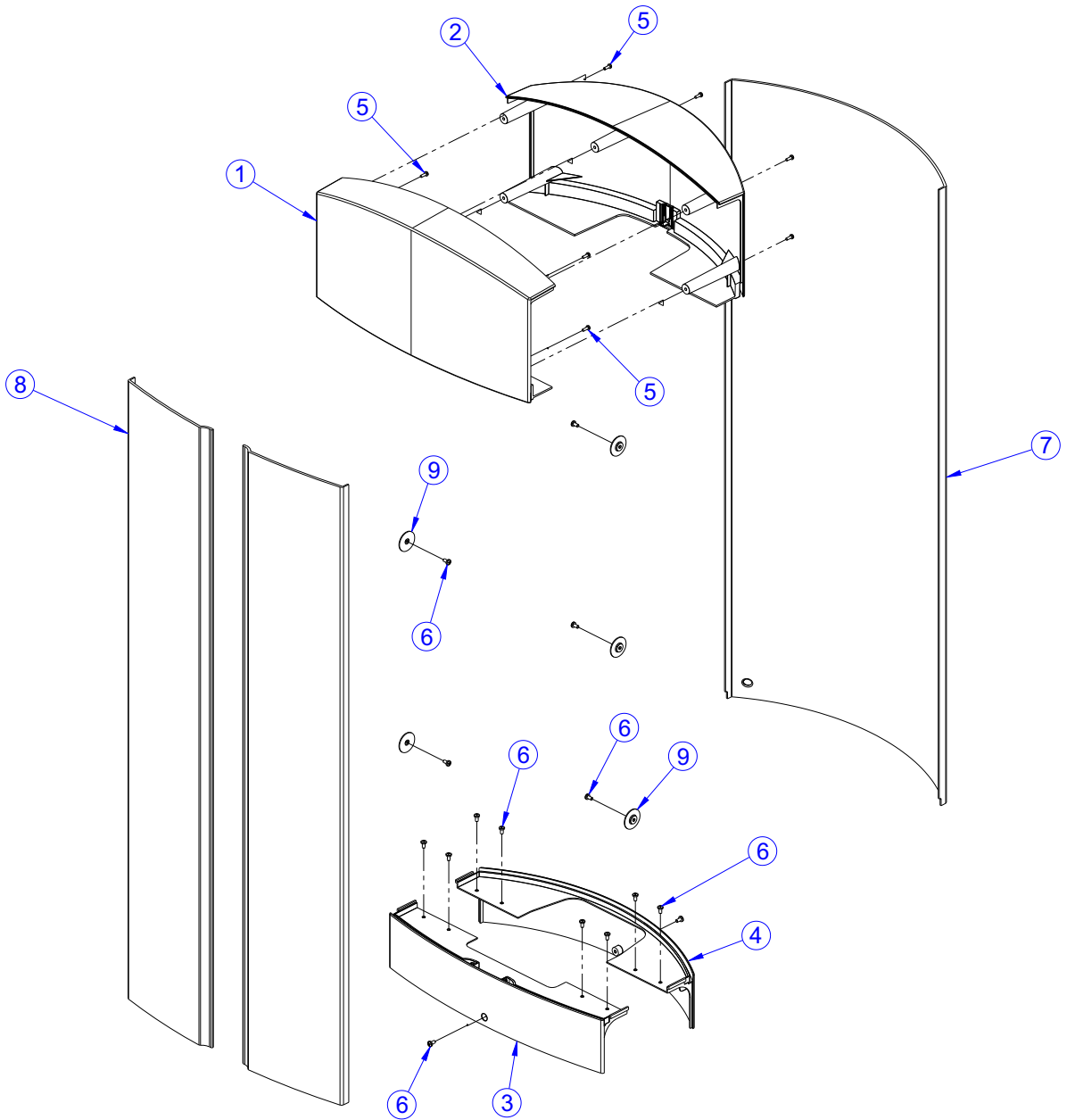
ITEM NO.	QTY.	PART NO.	DESCRIPTION
1	1	7777595	WLDMT, FZ SEAT ADJ HANDLE SHADOW GRAY
2	1	9164801	LINK, ADJUSTER
3	1	9154101	PIN, INDEX
4	2	7407501	PIN, LINK
5	4	3232401	RING, RETAINING, EXTERNAL
6	a	7287901	HANDLE, ADJUSTER - SILVER
	b	7287903	HANDLE, ADJUSTER - YELLOW
7	1	3110010	ROLL PIN, 1/8 X 7/8

FZTP TRICEPS PRESS MID-14 TOWER ASSEMBLY



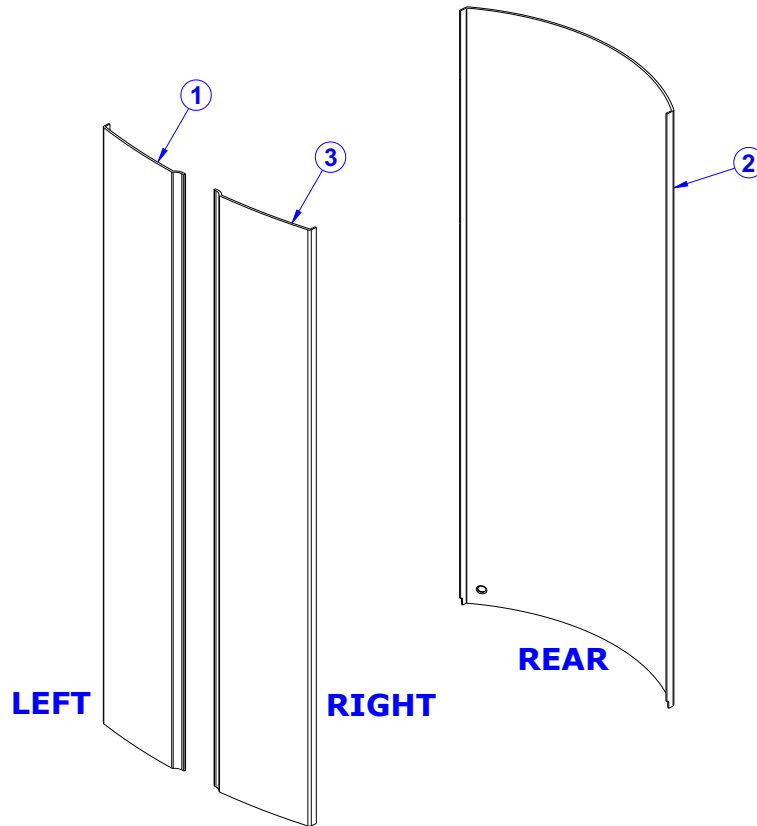
ITEM NO.	QTY.	PART NO.	DESCRIPTION
1	1	SEE PAGE 13	ASSY, WEIGHT STACK MID-14
2	2	7326301	CAP, D-TUBE-BTM
3	1	SEE PAGE 11	ASSY, TOWER PLASTICS-MID


FZTP TRICEPS PRESS STANDARD PLASTIC TOWER ASSEMBLY





ITEM NO.	QTY.	PART NO.	DESCRIPTION	COLOR
1	1	7318601	COVER, TOWER- TOP FRONT	-
2	1	7318701	COVER, TOWER- TOP REAR	-
3	1	7318801	COVER, TOWER- BOTTOM FRONT	-
4	1	7318901	COVER, TOWER- BOTTOM REAR	-
5	9	3236501	M4 X 0.7 PHL PAN MS ST ZN	-
6	16	3239101	SCREW, M5X10 PHL PAN TT ST	-
7	1	7765701	SHROUD, TOWER- REAR SHORT	-
8	2	7765601	SHROUD, TOWER- FRT SHORT RH	-
9	6	7583501	RETAINER, FZ SHROUD	-


FZTP TRICEPS PRESS OPTIONAL WRAPPED SHROUDS





BAMBOO		ITEM NO.	QTY.	PART NO.	DESCRIPTION
		1	1	8954201	SHROUD, FZ, FNT, SRT, LT -BAMBOO
		2	1	8949101	SHROUD, FZ, REAR, SRT -BAMBOO
		3	1	8949001	SHROUD, FZ, FNT, SRT, RT -BAMBOO

SKY		ITEM NO.	QTY.	PART NO.	DESCRIPTION
		1	1	8954301	SHROUD, FZ, FNT, SRT, LT -SKY
		2	1	8949301	SHROUD, FZ, REAR, SRT -SKY
		3	1	8949201	SHROUD, FZ, FNT, SRT, RT -SKY

BRONZE		ITEM NO.	QTY.	PART NO.	DESCRIPTION
		1	1	8954401	SHROUD, FZ, FNT, LT - BRONZE
		2	1	8949501	SHROUD, FZ, REAR -BRONZE
		3	1	8949401	SHROUD, FZ, FNT, SRT, RT -BRONZE

STEM		ITEM NO.	QTY.	PART NO.	DESCRIPTION
		1	1	8954501	SHROUD, FZ, FNT, SRT, LT -STEM
		2	1	8949701	SHROUD, FZ, REAR, SRT -STEM
		3	1	8949601	SHROUD, FZ, FNT, SRT, RT -STEM

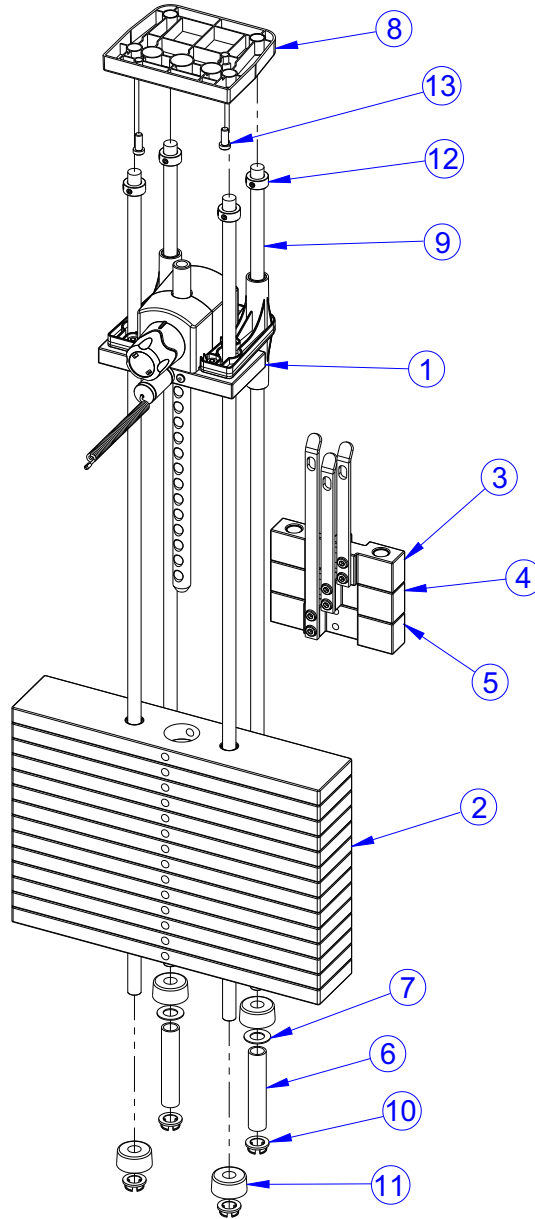
ROSEWOOD		ITEM NO.	QTY.	PART NO.	DESCRIPTION
		1	1	8954601	SHROUD, FZ, FNT, SRT, LT -ROSEWOOD
		2	1	8949901	SHROUD, FZ, REAR, SRT -ROSEWOOD
		3	1	8949801	SHROUD, FZ, FNT, SRT, RT -ROSEWOOD

STAINLESS STEEL		ITEM NO.	QTY.	PART NO.	DESCRIPTION
		1	1	8954701	SHROUD, FZ, FNT, SRT, LT -STAINLESS STEEL
		2	1	8950101	SHROUD, FZ, REAR, SRT -STAINLESS STEEL
		3	1	8950001	SHROUD, FZ, FNT, SRT, RT-STAINLESS STEEL

FZTP TRICEPS PRESS MID-14 WEIGHT STACK ASSEMBLY

WEIGHT STACK LABELS

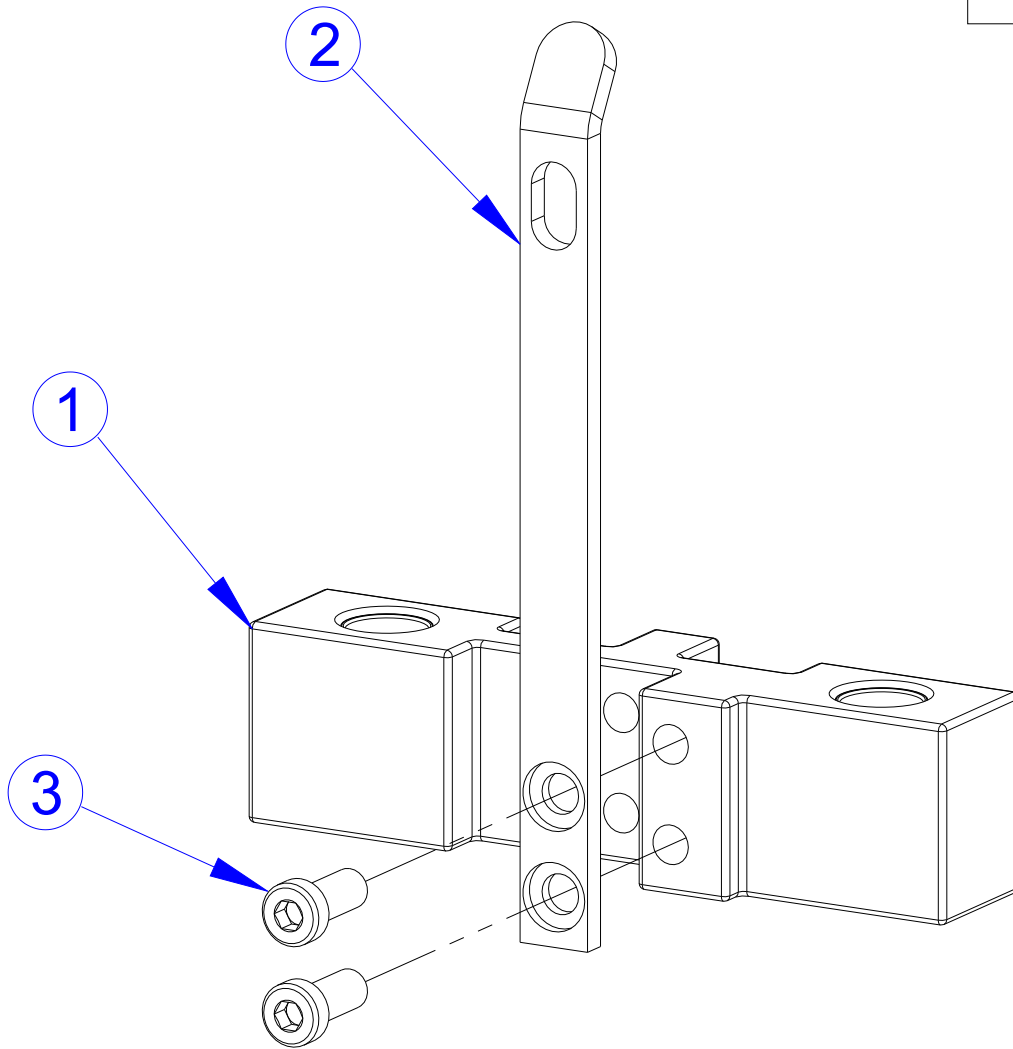
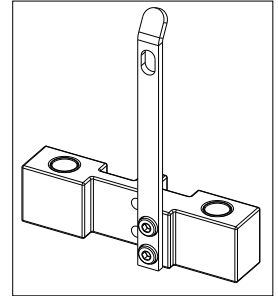
7927201	LABEL, 390 LB STACK
7927301	LABEL, 195 KG STACK



ITEM NO.	QTY.	PART NO.	DESCRIPTION	COLOR
1	1	7350701	ASSY, HEAD PLATE (14)	-
2	14	7328401	WEIGHT PLATE, 20 LB	-
3	1	7327601	ASSY, INCREMENT WT-5LB	-
4	1	7327701	ASSY, INCREMENT WT-10LB	-
5	1	7327801	ASSY, INCREMENT WT-15LB	-
6	2	7328701	SPACER, INC WT STACK 14 PLT	-
7	2	7351001	SPACER, INC WT STACK	-
8	1	7621101	RETAINER, GUIDE ROD-TOP	-
9	4	7328602	GUIDE ROD, .75 OD SOLID X 53.50	-
10	4	7337901	BUSHING, GUIDE ROD	-
11	4	7352101	CUSHION, WEIGHT STACK	-
12	4	3103301	SHAFT COLLAR, 3/4" ID ZINC	-
13	2	3236202	M10 X 1.5 X 25 HXS SOC CS SS	-

FZTP TRICEPS PRESS

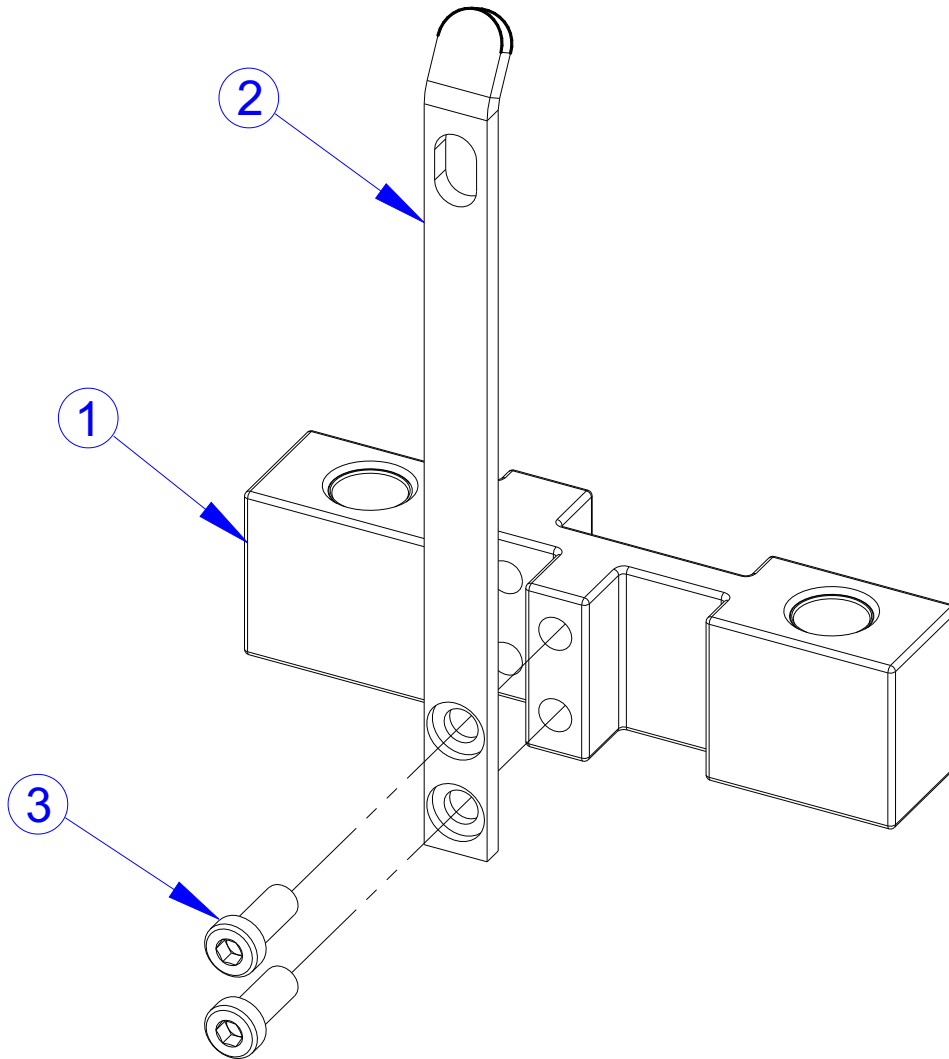
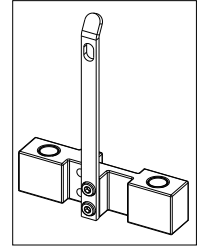
5 LB. INCREMENT WEIGHT ASSEMBLY - 7327601



ITEM NO.	QTY.	PART NO.	DESCRIPTION
1	1	7968501	ASSY, FZ INC WEIGHT 5LB
2	1	7328001	BRKT, INCREMENT WT - 5 LB
3	2	3236202	SCREW, M10 X1.5 25MM

FZTP TRICEPS PRESS

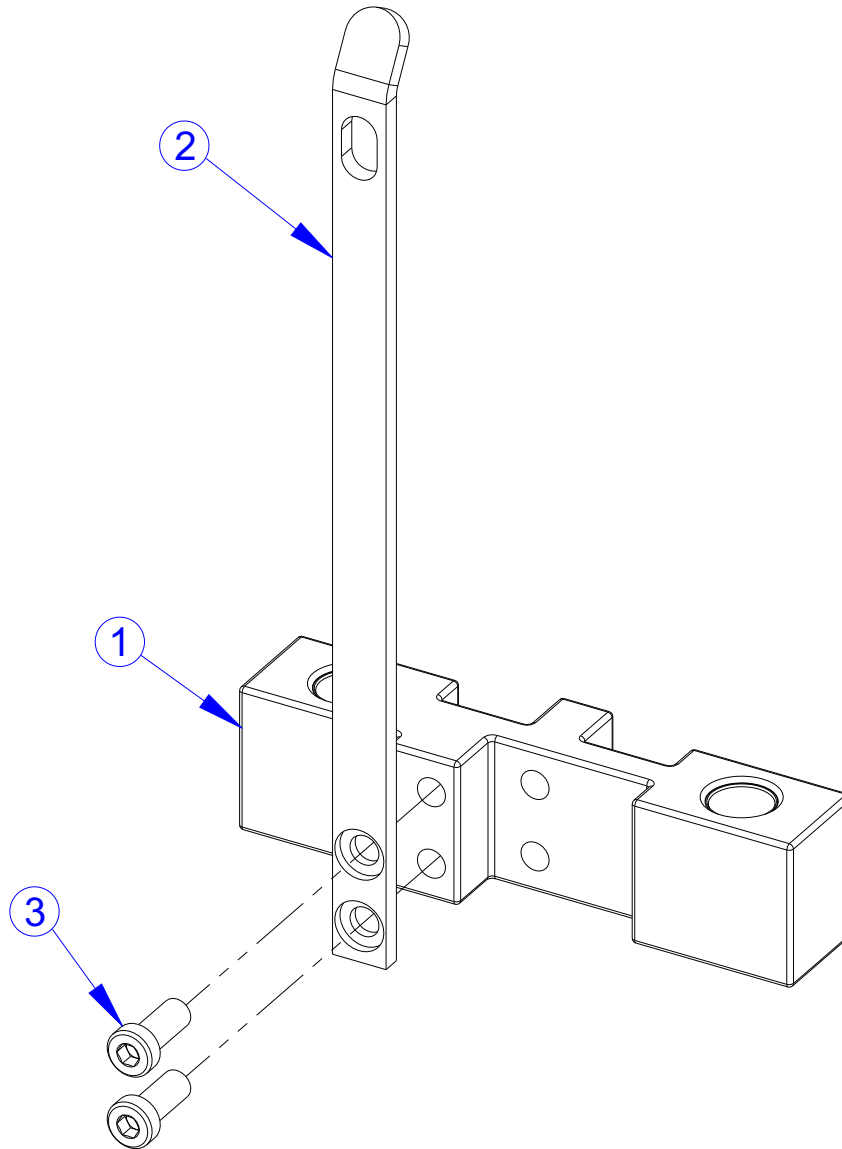
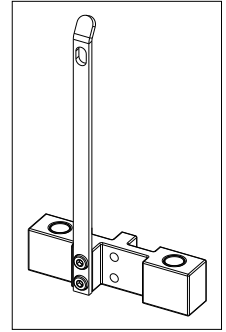
10 LB. INCREMENT WEIGHT ASSEMBLY - 7327701



ITEM NO.	QTY.	PART NO.	DESCRIPTION
1	1	7968501	ASSY, FZ INC WEIGHT 5LB
2	1	7328101	BRKT, INCREMENT WT - 10 LB
3	2	3236202	SCREW, M10 X1.5 25MM

FZTP TRICEPS PRESS

15 LB. INCREMENT WEIGHT ASSEMBLY - 7327801

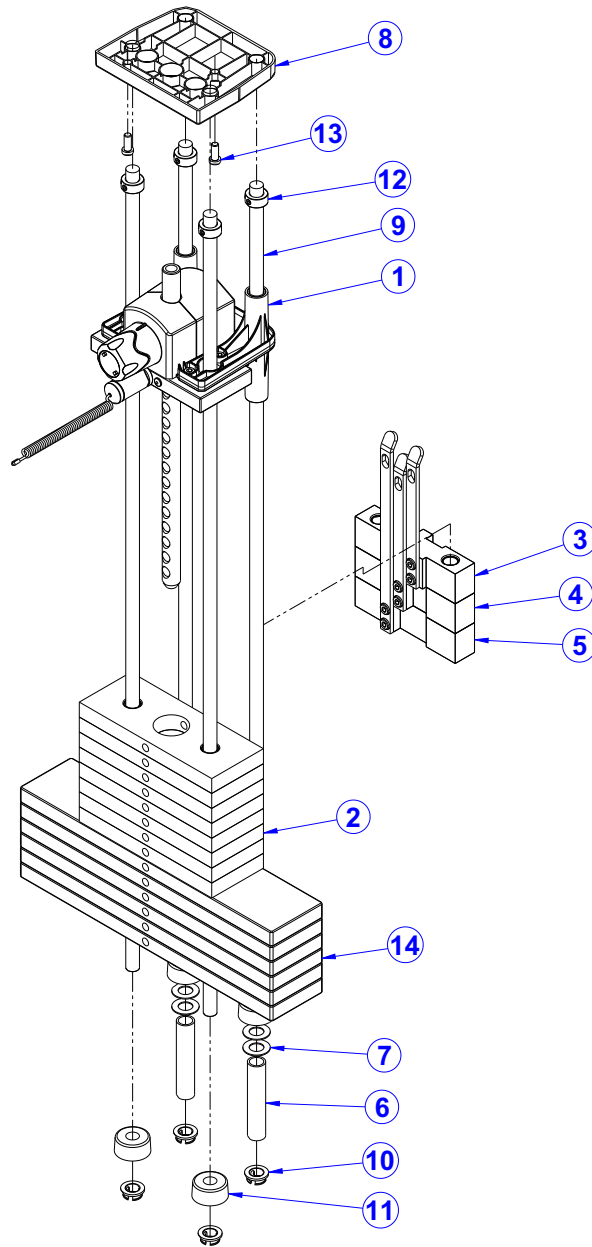


ITEM NO.	QTY.	PART NO.	DESCRIPTION
1	1	7968501	ASSY, FZ INC WEIGHT 5LB
2	1	7328201	BRKT, INCREMENT WT - 15 LB
3	2	3236202	SCREW, M10 X1.5 25MM

FZTP TRICEPS PRESS

OPTIONAL LIGHT MID-14 WEIGHT STACK ASSY.

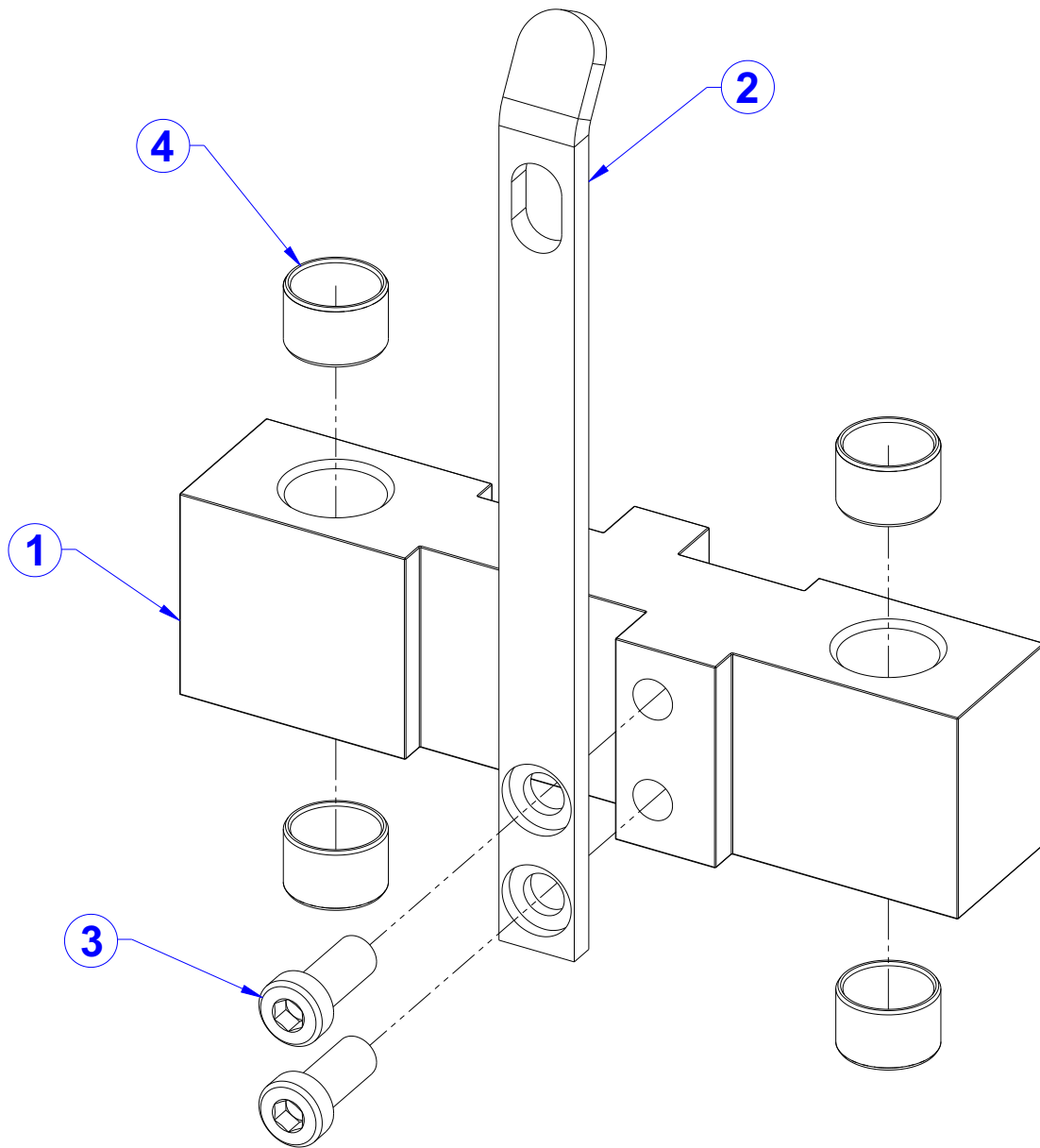
WEIGHT STACK LABELS	
8867101	LABEL, 190 LB STACK



ITEM NO.	QTY.	PART NO.	DESCRIPTION	COLOR
1	1	7350701	ASSY, HEAD PLATE (14)	-
2	8	7353701	ASSY, 10 LB PLATE	-
3	1	8861301	ASSY, FZ INC WEIGHT - 2.5 LB	-
4	1	8861401	ASSY, FZ INC WEIGHT - 5 LB	-
5	1	8861501	ASSY, FZ INC WEIGHT - 7.5 LB	-
6	2	7328701	SPACER, INC WT STACK - 14 PLT	-
7	4	7351001	SPACER, INC WT STACK	-
8	1	7621101	RETAINER, GUIDE ROD - TOP	-
9	4	7328602	GUIDE ROD, .75 OD SOLID 53.50	-
10	4	7337901	BUSHING, GUIDE ROD	-
11	4	7352101	CUSHION, WEIGHT STACK	-
12	4	3103301	SHAFT COLLAR, 3/4 I.D. ZINC	-
13	2	3236202	SCREW, M10 X1.5 25MM	-
14	6	7328401	WEIGHT PLATE, 20 LB	-

FZTP TRICEPS PRESS

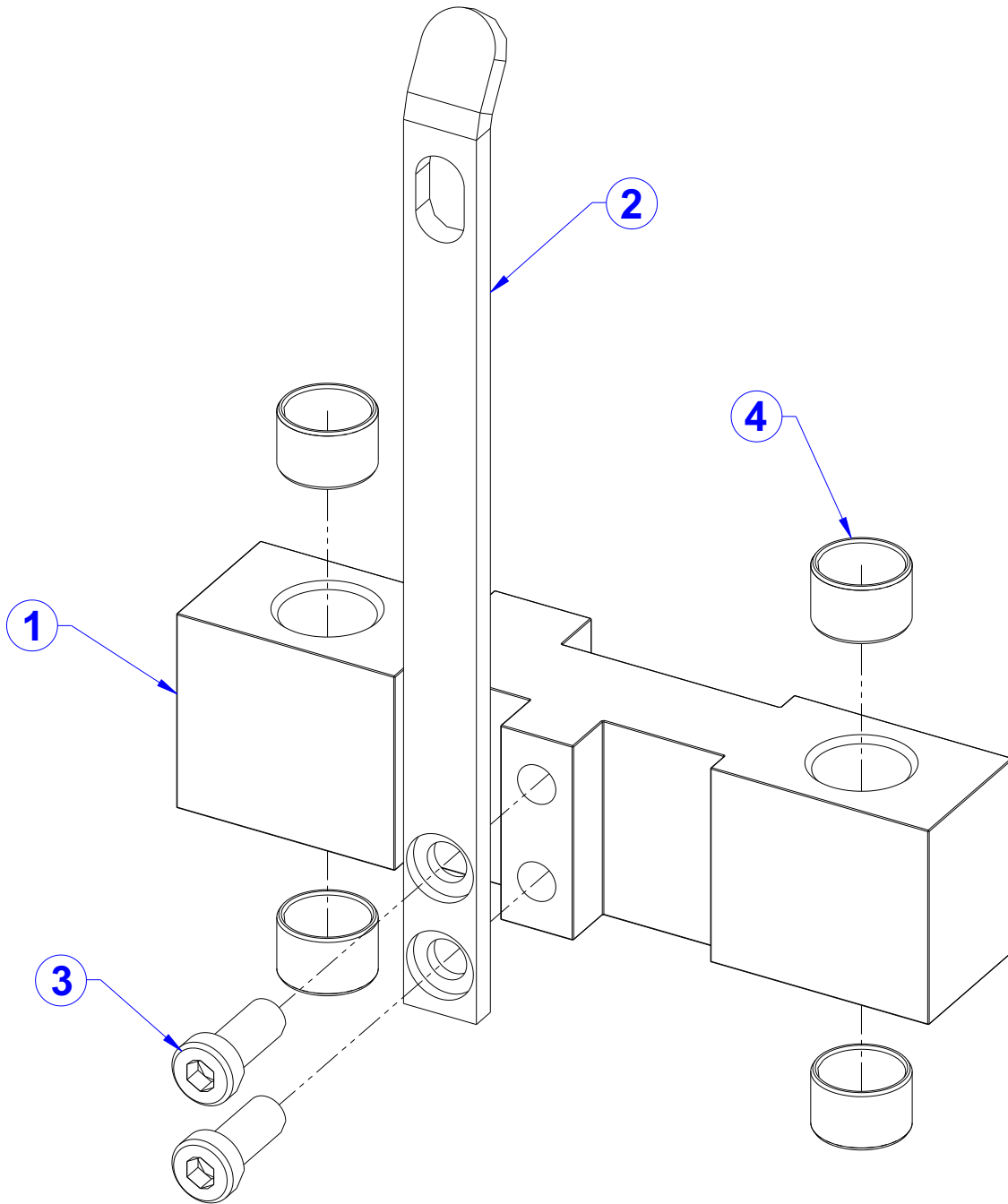
OPTIONAL 2.5 LB. INCREMENT WEIGHT ASSY. - 8861301



ITEM NO.	QTY.	PART NO.	DESCRIPTION
1	1	8861295	INCREMENT WEIGHT, FZ OPTIONAL - SG
2	1	7328001	BRKT, INCREMENT WT - 5 LB
3	2	3236202	SCREW, M10 X1.5 25MM
4	4	3202501	BEARING, SLEEVE 20 ID X 23.00 X 15 MM

FZTP TRICEPS PRESS

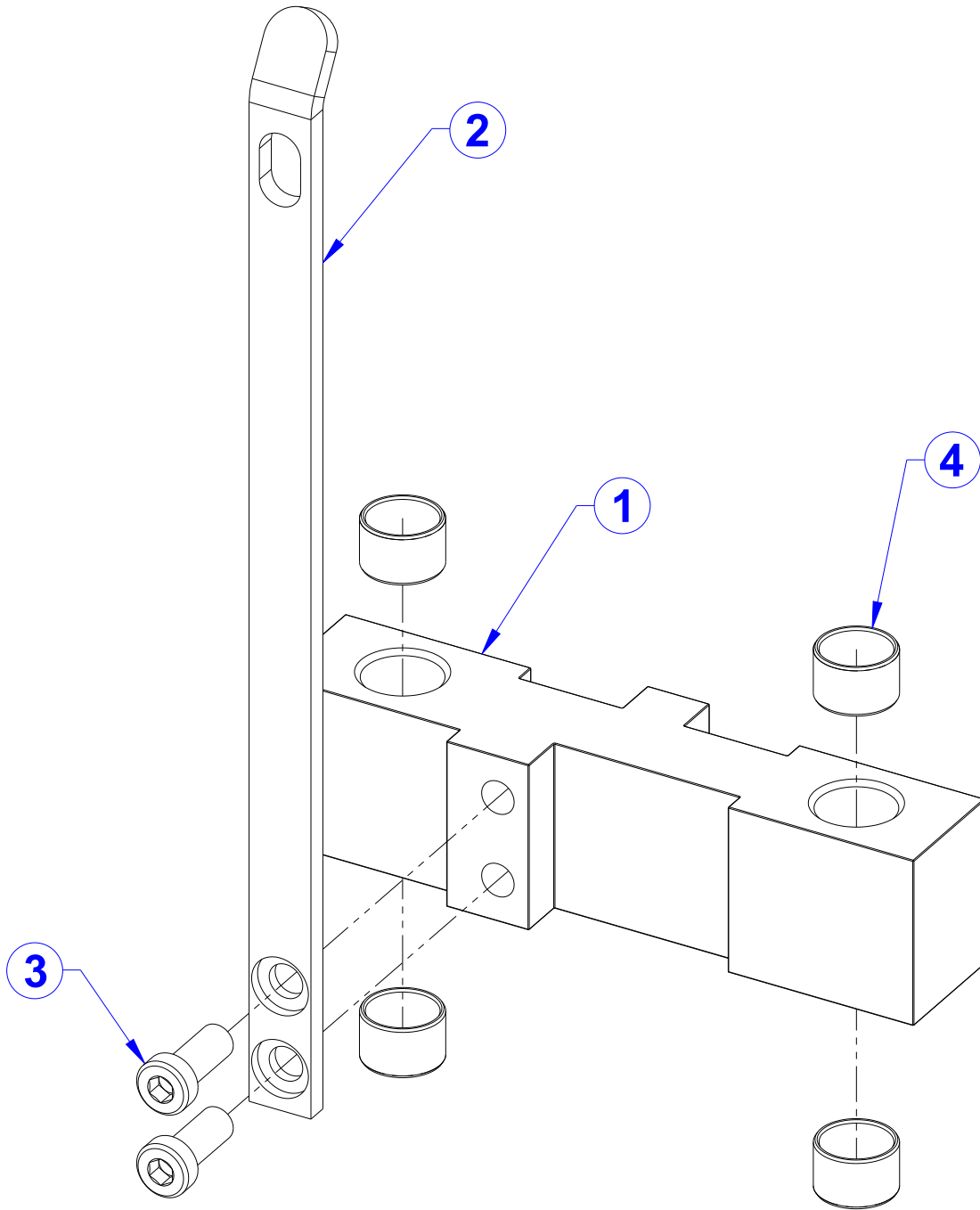
OPTIONAL 5 LB. INCREMENT WEIGHT ASSY. - 8861401



ITEM NO.	QTY.	PART NO.	DESCRIPTION
1	1	8861295	INCREMENT WEIGHT, FZ OPTIONAL - SG
2	1	7328101	BRKT, INCREMENT WT - 10 LB
3	2	3236202	SCREW, M10 X1.5 25MM
4	4	3202501	BEARING, SLEEVE 20 ID X 23.00 X 15 MM

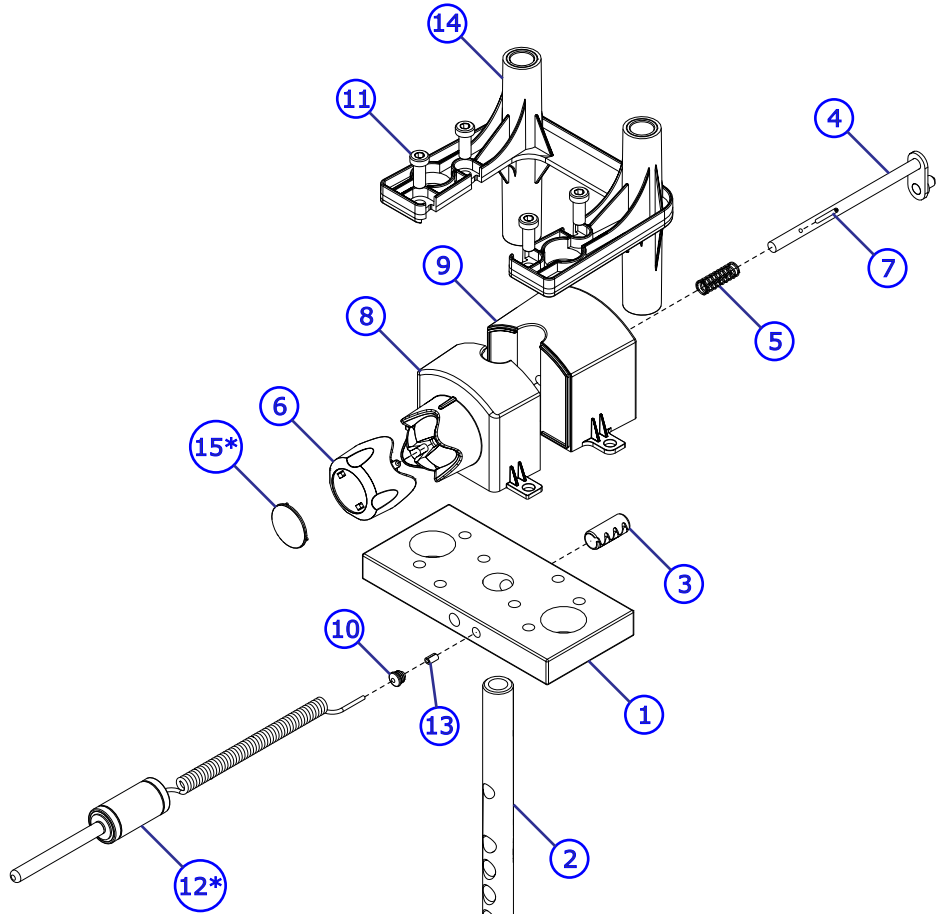
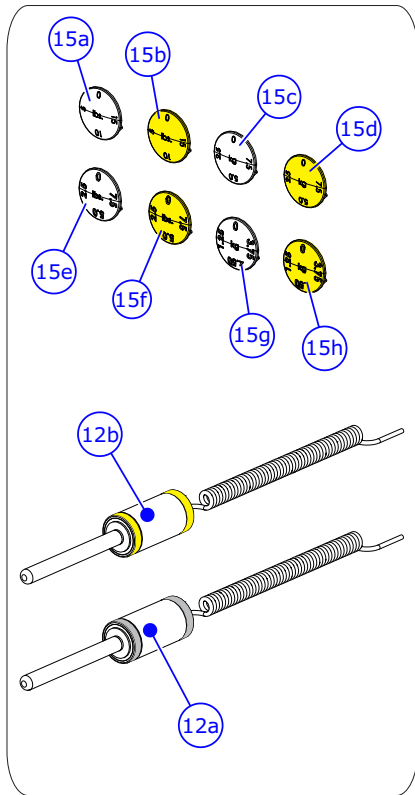
FZTP TRICEPS PRESS

OPTIONAL 7.5 LB. INCREMENT WEIGHT ASSY. - 8861501



ITEM NO.	QTY.	PART NO.	DESCRIPTION
1	1	8861295	INCREMENT WEIGHT, FZ OPTIONAL - SG
2	1	7328201	BRKT, INCREMENT WT - 15 LB
3	2	3236202	SCREW, M10 X1.5 25MM
4	4	3202501	BEARING, SLEEVE 20 ID X 23.00 X 15 MM

FZTP TRICEPS PRESS HEAD PLATE ASSEMBLY - 7350701



ITEM NO.	QTY.	PART NO.	DESCRIPTION	WHERE USED
1	1	7326701	HEAD PLATE	-
2	1	7328901	STEM, 14 PLATE	-
3	1	3236001	BUSHING, SPRING PIN	-
4	1	7327201	WLDMT, INCREMENT WT PIN	-
5	1	8024501	SPRING, 1/2 OD X 1-1/2	-
6	1	7326101	KNOB, INC WT SELECTOR	-
7	1	3110008	ROLL PIN, 1/8 X 1-1/4	-
8	1	7326401	HOUSING, SELECTOR - FRONT	-
9	1	7326501	HOUSING, SELECTOR - REAR	-
10	1	7356501	PLUG, LANYARD ATTACHMENT	-
11	4	3236202	SCREW, M10 X1.5 25MM	-
12*	a	7338101	ASSY, WT STACK SELECTOR PIN-SILVER	-
	b	7338103	ASSY, WT STACK SELECTOR PIN-YELLOW	-
13	1	7523601	CRIMP, CABLE	-
14	1	8867301	ASSY, FZ, STABILIZER WITH BUSHINGS	-
15*	a	7398601	CAP, SELECTOR KNOB - 5 LBS, SILVER	REG. STACK / LBS.
	b	7398603	CAP, FZ SELECTOR KNOB - 5 LBS, YELLOW	REG. STACK / LBS.
	c	7398701	CAP, FZ SELECTOR KNOB - 2.5 KG, SILVER	REG. STACK / KG.
	d	7398703	CAP, FZ SELECTOR KNOB - 2.5 KG, YELLOW	REG. STACK / KG.
	e	8865801	CAP, FZ SELECTOR KNOB - 2.5 LBS, SILVER	LIGHT STACK / LBS.
	f	8865803	CAP, FZ SELECTOR KNOB - 2.5 LBS, YELLOW	LIGHT STACK / LBS.
	g	8946501	CAP, FZ SELECTOR KNOB - 1.25 KG, SILVER	LIGHT STACK / KG.
	h	8946503	CAP, FZ SELECTOR KNOB - 1.25 KG, YELLOW	LIGHT STACK / KG.

Kit exists for component set. See bulletin FZ02012701N

* Language specific/Weight stack item. Order separately-not part of assembly.

FZTP TRICEPS PRESS IMAGE

